

# Cancer Incidence, Mortality and Survival by Deprivation in Wales



Welsh Cancer Intelligence and  
Surveillance Unit

July 2009



## Table of Contents

1	Introduction.....	1
2	Definitions of statistical terms .....	2
3	Executive Summary.....	5
4	Results.....	9
4.1	All Malignancies excluding Non Melanoma Skin Cancer.....	9
4.2	Prostate Cancer.....	15
4.3	Female Breast Cancer.....	18
4.4	Lung Cancer.....	21
4.5	Colorectal Cancer.....	27
4.6	Bladder Cancer.....	33
4.7	Ovarian Cancer.....	39
4.8	Stomach Cancer .....	42
4.9	Cancer of the Corpus Uteri.....	48



## Introduction

This report details cancer incidence, mortality and survival by deprivation in Wales.

For incidence and mortality data, the period of diagnosis 1993-2007 has been examined. Tables are presented showing the total number of cases for males and females for three five year periods, 1993-1997, 1998-2002 and 2003-2007 by quintile of deprivation. The income domain of the Welsh Index of Multiple Deprivation (WIMD) 2005<sup>1</sup> was used to assign a quintile to each case by assigning a Lower Super Output area (LSOA) based on the postcode at time of diagnosis or death. Each quintile consists of an equal population (or as close as possible). Figure 1 shows the quintiles on a map of Wales from affluent to deprived. Crude rates (CR) and European Age Standardised Rates (EASR) are also presented with 95% confidence intervals shown for the EASR per 100,000 population. Mortality data for Wales is sourced from the Office for National Statistics (ONS)<sup>2</sup>. The EASR ratio is shown for each quintile of deprivation with the affluent quintile being the reference quintile. The number of excess cases or deaths is shown for quintiles 2 to quintile 5 (most deprived) based on the EASR in the affluent quintile.

For survival analysis the period of diagnosis considered is 1993-2002, split into two periods 1993-1997 and 1998-2002 to allow comparison. All cases have been followed up until 31st December 2007, thus allowing a minimum follow up period of 5 years after diagnosis for all patients included in the analysis. For each cancer site 1 and 5 year observed and relative survival estimates are presented for both diagnosis periods by sex and quintile of deprivation. Median observed survival is also calculated for each diagnosis period, sex and quintile of deprivation.

The cancer sites in the report are ordered in terms of the most common cancers diagnosed throughout the fifteen year period examined.

---

<sup>1</sup> <http://wales.gov.uk/topics/statistics/theme/wimd2005/?lang=en>

<sup>2</sup> <http://www.statistics.gov.uk>

## Definitions of statistical terms

Incidence is defined as the number of new registrations of cancer made in a particular time period. Mortality is defined as the number of deaths that occurred in a particular time period. Survival is defined as the proportion of cases that were diagnosed in a particular time period and are still alive at a specific interval post diagnosis.

The crude rate is the total number of cases per year as a proportion of the total population. It is usually quoted per 100,000 population. Rates for older age groups are in general, much higher than those for younger people, so the crude rate for an area is very much influenced by the age structure of the population of that area. This means that comparisons of the crude rates between populations with different age structures can be misleading. For this reason, methods have been developed to age-standardise cancer incidence rates.

The European Age Standardised Rate per 100,000 population is calculated by applying age specific rates by quintile in Wales to the relevant standard European population. These are then summed across all age groups to obtain the overall EASR. The age structure of the Welsh population differs from that of the European standard population, and as such the standardised rate for Wales, for any particular type of cancer will differ from the crude rate. In general, because the Welsh population is slightly older than the European standard, the effect will be to lower the crude rate.

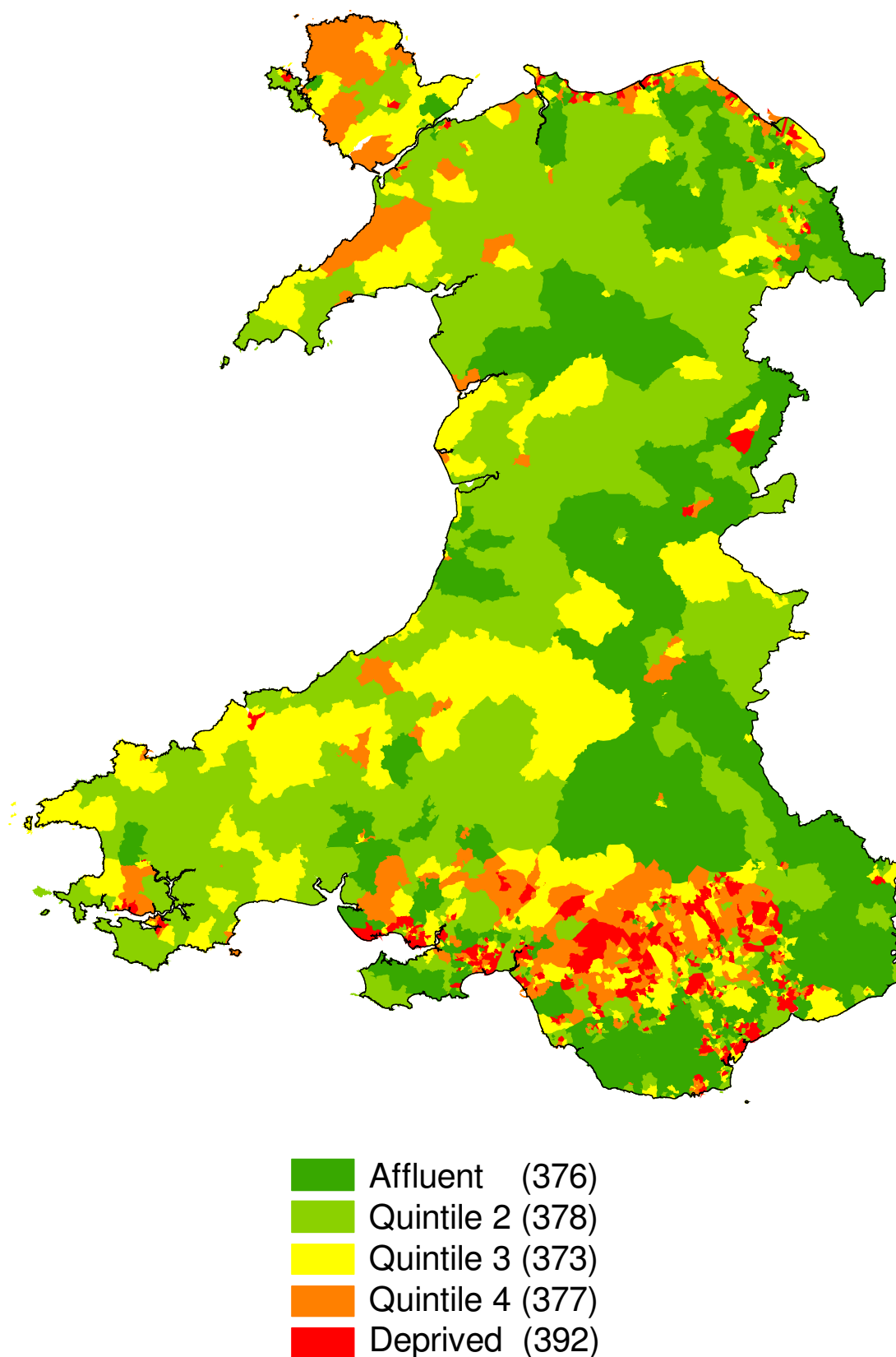
The EASR ratio is calculated by dividing the EASR in each quintile by the EASR in the affluent quintile and the number of excess cases is calculated by dividing the total number of cases by the EASR ratio in each quintile and taking this figure away from the total number of cases in each quintile. This is a crude measure. If the excess number of cases is a negative number, then this indicates that there is an excess of cases in the affluent quintile compared to that specific quintile of deprivation.

Observed (crude) survival is the probability of survival at a given time since diagnosis, irrespective of cause of death. It is usually expressed as the percentage alive at the given time point, e.g. 1 year, 5 years etc. since diagnosis. Problems with this method arise if comparisons are to be made between populations with different age distributions. Observed survival is likely to be lower in an older population as they are more likely to die not just of the cancer, but also of other causes.

Relative survival is the most widely used method in population studies. It is the ratio of the survival observed in the group of cancer patients to the survival that would be expected if they were subject to the same overall mortality rates by age, sex and calendar period as the general population. The expected probabilities are obtained from life tables for Wales that provide the life expectancy of persons for a given year by age and sex. The problems arising with crude survival are therefore overcome. It enables one to measure variations in cancer survival (or its complement, mortality) independently of variations in expected (background) mortality associated with age, geographic region, deprivation and calendar time.

Median observed survival time is defined as the length of time after diagnosis until half the patients have died, regardless of their cause of death. Thus by definition, it is usually highest in cancers that have a good prognosis and those that are diagnosed in younger people.

Figure 1: Map of quintiles (equal populations) in Wales using the WIMD 2005, income domain (number of LSOAs in brackets).





## Executive Summary

For all malignancies excluding non melanoma skin cancer, there have been increases in incidence rates for all three periods analysed for all quintiles and for both sexes (excluding males quintile 4 and the most deprived category in 1998-2002 compared with 1993-1997). These increases are higher in the more affluent areas compared to the deprived areas for males showing excess cases decreasing from 1938 cases in 1993-1997 to 1509 cases in 2003-2007 – an overall decrease in excess cases from 5216 cases in 1993-1997 to 4147 cases in 1998-2002 to 3507 cases in 2003-2007 for males and from 4370 excess cases in 1993-1997 to 2910 cases in 1998-2002 to 2338 cases in 2003-2007 for females compared to those in the most affluent areas. Overall, both sexes show a decrease in the deprivation gap between most affluent to most deprived in the latest period 2003-2007 compared to the other two periods. Mortality rates show decreases by quintile for each of the three periods and for both sexes, however, for males the excess number of deaths for each period compared to affluent increases in the last period compared with the previous period but is lower than the first period. For females, the total number of excess deaths is lowest in the final period which shows the deprivation gap closing for females. The most affluent have tended to show higher increases in relative survival from the first period to the second period compared with the deprived for both one year and five year survival for males. For females, the increases are very similar for all quintiles – by approximately 4 percentage points for all quintiles.

Incidence shows an inverse relationship with deprivation for female breast cancer – the most affluent tend to have higher rates compared to those in the most deprived areas of Wales. This is more pronounced in the final period 2003-2007. The rates in the most deprived quintile for all periods are similar, however, the increase seen in the most affluent is approximately 17% from period one to period three resulting in more excess cases in the affluent quintile compared to all other quintiles in 2003-2007. There does not appear to be a trend for mortality trends by deprivation, however, the EASR by quintile decreases from the first period to the final period by approximately 20% for both affluent quintiles and most deprived quintiles. One year and five year relative survival rates have improved mostly in the most deprived groups which show the survival deprivation gap closing in the 1998-2002 compared with 1993-1997. In general, survival of female breast cancer is very good with all quintiles having one year relative survival rates over 90% in 1998-2002. The time taken for half the patients to die is over ten and a half years in 1993-1997. This cannot be assessed in the later period at present as half of the patients were yet to die as of the end of 2007.

EASRs for prostate cancer have continually increased in terms of incidence, especially for the most affluent quintile, by approximately 82% for the affluent quintile from 1993-1997 to 2003-2007 compared with 53% for the most deprived areas in Wales. For incidence, a similar trend is seen here as for female breast cancer with the most excess cases (1335 cases) being in the affluent quintile in 2003-2007 compared to all other quintiles. EASR for mortality generally show a decreasing trend over the three periods with EASR in line with the overall Wales EASR for each of quintiles for each of the three periods. One year relative survival rates show improving rates between both periods by approximately 6 percentage points for one year relative survival, however the difference in relative survival between the affluent and most deprived was between 6 and 7 and a half percentage points with the affluent quintile having the best survival rates even though this group had the highest incidence rates. In 1998-2002, it took nearly 7 years for at least half of those patients diagnosed to die in the most affluent group compared with 4.2 years in 1993-1997. For the deprived group in 1993-1997, it only took just over 3 years for at least half of those patients to die.

Incidence rates for lung cancer in the most deprived quintile were over twice as high as those in the affluent quintile for both sexes, however the incidence rates had fallen over the three periods for males but had increased for females. Additionally, the latest period, 2003-2007 for females showed the highest number of excess cases for the most deprived group at 837 cases compared with 618 cases in 1993-1997 and 635 cases in 1998-2002. The excess number of cases in all other quintiles compared with the affluent was also high for males in the period 2003-2007 at 2431 cases. In terms of mortality, the rates decrease over the periods for each of the quintiles for males. However, there is still a large number of excess deaths in the most deprived quintile in 2003-2007 compared to all other quintiles and all mortality rates in the most deprived group are over twice that of those in the most affluent. For females, again, all mortality rates are over twice that of the most affluent for the deprived quintile with the highest of these rates being in the most recent time period, 2003-2007. One year and five year relative survival rates only slightly improve between both periods analysed for both sexes.

Trends for male colorectal cancer appear similar over time as all rates for specific quintiles in each period are similar, even though those in the most deprived areas tend to have the highest of those rates. For females, the trend is very similar by quintile for those diagnosed in 1998-2002 and 2003-2007 but the rates in 1993-1997 are higher in quintile 3 and subsequent deprived areas in Wales compared with other periods. The number of excess cases for females is much lower in 2003-2007 at 238 cases compared with 1993-1997 at 509 cases in the other quintiles compared to those in the affluent quintile. The majority of mortality rates by quintile of deprivation show those in 2003-2007 having the lowest rates for both sexes. However, the total number of excess deaths is highest in the last period 2003-2007 compared to the most affluent for males. There have been improvements for all quintiles for both periods and both sexes in terms of one year and five year relative survival with the greatest improvements in quintile 3 for males and in the most deprived areas for females. The survival deprivation gap has also clearly closed in 1998-2002 compared with 1993-1997 for females. The time taken for half the patients to die is similar for both sexes at approximately two and a half years in 1998-2002.

Incidence rates for bladder cancer show similar trends for all periods and for all quintiles with slightly lower rates in the latest period 2003-2007 for males. However, the new coding rules from 2007 onwards may have a slight effect on the rates presented here. For females, the rates are very similar in the second and third period and follow a similar trend, however the rates in the first period vary from one quintile to the next. For mortality, rates for both sexes have decreased over the periods in Wales as a whole. Also, the number of excess deaths has decreased from period one to period three for both sexes. One year relative survival rates are very high for males, over 80% in 1998-2002 with females nearing 74%. Median survival times are continually improving with nearly half of the patients dying within seven and a quarter years for males and nearly five years for females in 1998-2002.

Incidence rate for ovarian cancer vary over the three periods with some quintiles having higher rates than other quintiles in other periods. However, the lowest of these rates are seen in the latest period, 2003-2007 (excluding the most deprived) even though the number of total cases in Wales is higher in this period than that in 1993-1997. Mortality rates show a similar trend as incidence with the lowest rates mostly in the period 2003-2007. However, the rates in this period tend to show the opposite compared to those in the other two periods with the highest rates in the most deprived quintile. Survival rates have generally improved for all quintiles for both one year and five year relative survival excluding the most deprived quintiles which are slightly lower. However, the median survival has improved slightly from nearly sixteen months in 1993-1997 to nearly twenty one months in 1998-2002.

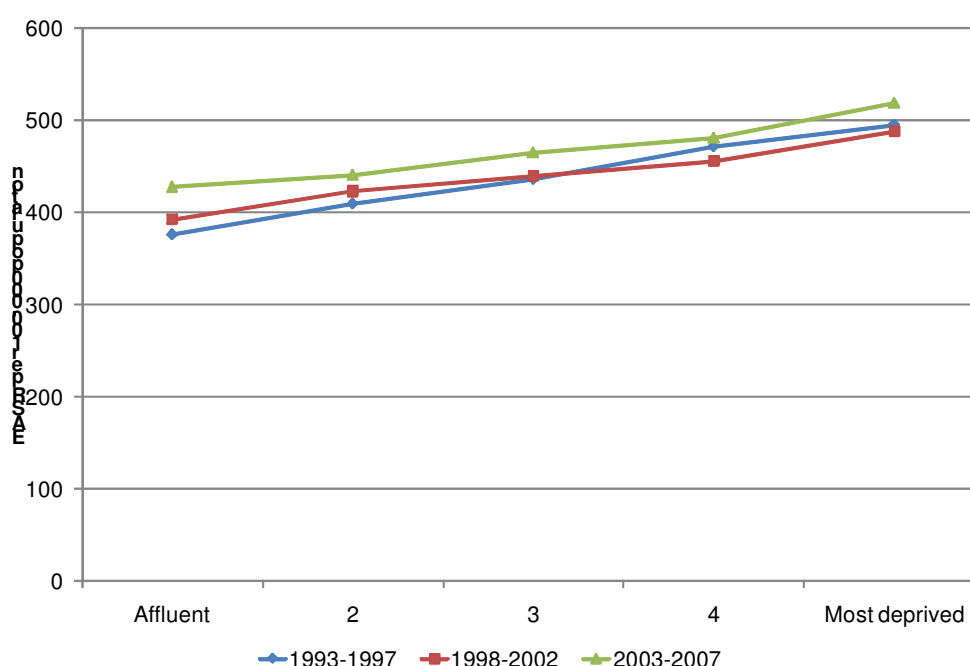
Incidence rates for stomach cancer have decreased for each quintile over the three periods for both sexes with the number of excess cases in the most deprived quintiles continually decreasing showing the deprivation gap is closing. For mortality, a similar trend is seen as for incidence, with the EASR continually decreasing over the periods with each quintile having lower rates than in the period previously. Survival rates for stomach cancer are very poor but there does appear to be a big increase in one year relative survival rates for each quintile for males with some large increases for some quintiles for females also. The time taken for half the patients to die in each cohort has slightly increased from around four and a half months in the first period to just over six months in the second period for males and from three and a half months to four and a half months for females respectively.

Incidence rates for cancer of the corpus uteri generally follow the same trend for the three periods with the gap between most affluent and most deprived decreasing throughout the first two periods and then slightly increasing again in the third period. The number of excess cases is higher in the third period (151 cases) compared with the second period (115 cases) but is still lower than that in the first period (246 cases). Mortality trends vary between all periods due to the low numbers of deaths in each of the periods with the most affluent having the highest rates in the period 2003-2007 showing an excess of deaths in this period which cannot be seen in the other periods. Relative survival rates have generally improved for the majority of quintiles for both periods with five year relative survival figures approaching 80% in the latest period for the most affluent. Survival for cancer of the corpus uteri is very high compared to other cancers, hence the very small changes seen in the periods. This can be seen in the first period with half of the patients taking nearly twelve and a half years to die.

To summarise, the deprivation gap appears to be closing for all malignancies excluding non melanoma skin cancer in Wales in the latest period analysed compared to other periods for incidence even though rates continue to increase. A similar trend is seen for mortality with the rates decreasing from period to period with the total number of excess deaths for all quintiles compared with the most affluent decreasing in the period 2003-2007 compared with 1993-1997. However, results for site specific cancers show varying trends in terms of deprivation status in Wales which should be continually monitored over the coming years.

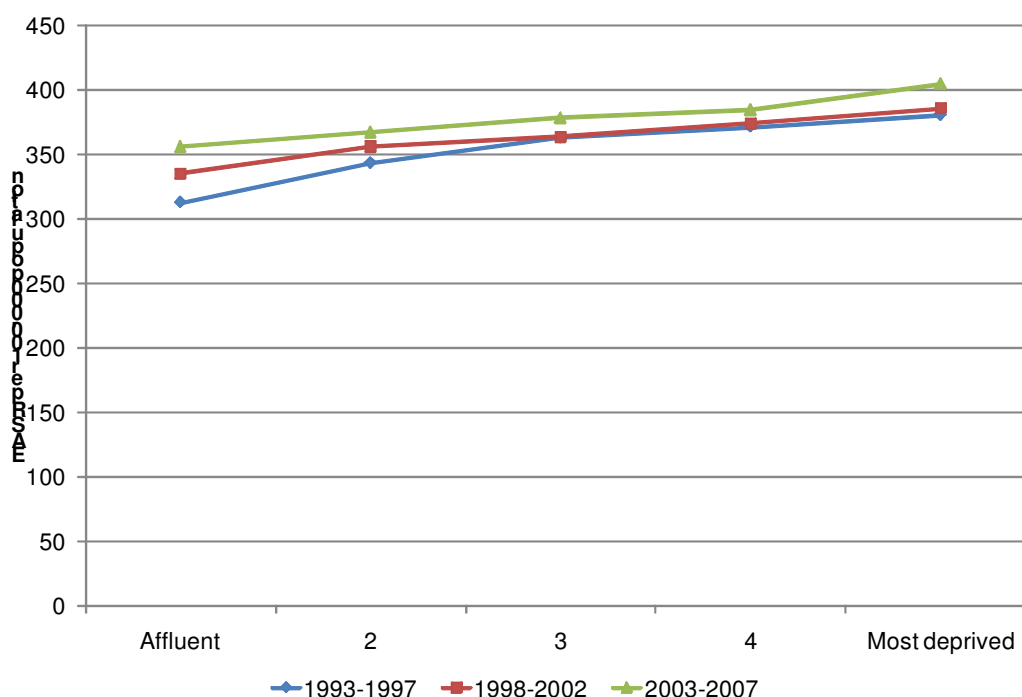
**INCIDENCE: All Malignancies excluding non melanoma skin cancer***ICD10 codes: C00-C97 excluding C44***MALES**

1993-1997						
Deprivation Quintile	Total Cases	CR	EASR	95% Confidence Interval	EASR Ratio	Excess Cases
Affluent	5991	451.28	376.24	(366.63,385.85)	1.00	0
2	7049	511.95	409.93	(400.25,419.59)	1.09	579
3	7621	547.68	436.69	(426.74,446.64)	1.16	1055
4	8126	566.45	471.70	(461.31,482.08)	1.25	1644
Most Deprived	8062	545.55	495.27	(484.35,506.17)	1.32	1938
WALES	36849	525.79	438.28	(433.75,442.79)		
1998-2002						
Deprivation Quintile	Total Cases	CR	EASR	95% Confidence Interval	EASR Ratio	Excess Cases
Affluent	6851	494.62	392.67	(383.28,402.04)	1.00	0
2	7808	555.37	423.18	(413.68,432.67)	1.08	563
3	8051	572.17	440.01	(430.26,449.75)	1.12	866
4	8193	573.99	456.04	(446.04,466.03)	1.16	1139
Most Deprived	8070	560.77	488.18	(477.43,498.91)	1.24	1579
WALES	38973	551.67	439.38	(434.97,443.78)		
2003-2007						
Deprivation Quintile	Total Cases	CR	EASR	95% Confidence Interval	EASR Ratio	Excess Cases
Affluent	8251	565.99	427.78	(418.44,437.12)	1.00	0
2	8990	618.56	440.87	(431.60,450.13)	1.03	267
3	9133	633.13	465.06	(455.35,474.76)	1.09	732
4	9005	626.77	481.15	(471.06,491.23)	1.12	999
Most Deprived	8593	602.97	518.88	(507.78,529.98)	1.21	1509
WALES	43972	609.41	464.73	(460.32,469.13)		



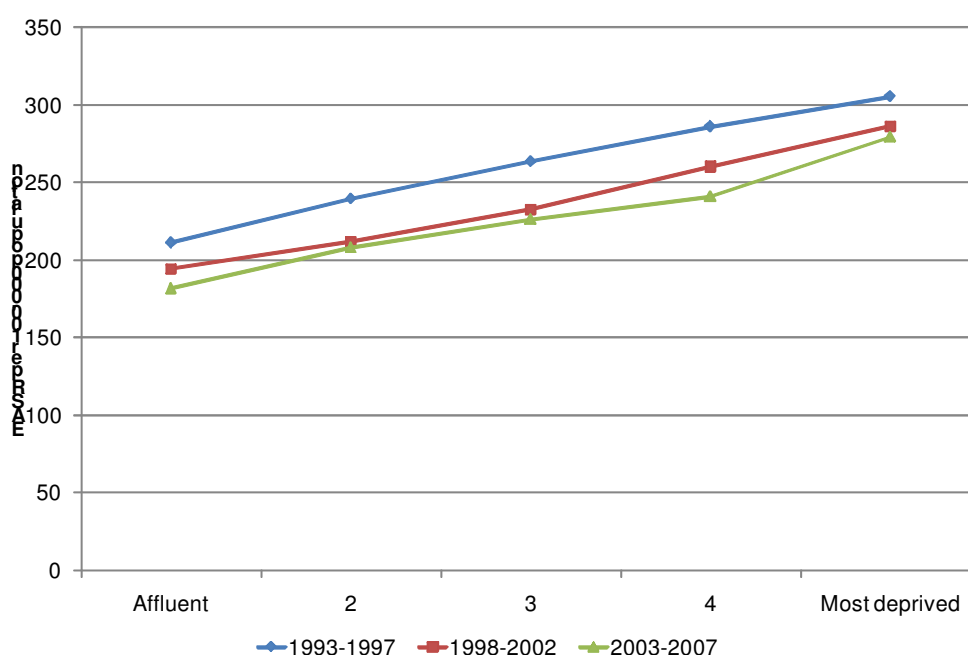
## FEMALES

1993-1997						
Deprivation Quintile	Total Cases	CR	EASR	95% Confidence Interval	EASR Ratio	Excess Cases
Affluent	5885	419.51	312.62	(304.13,321.10)	1.00	0
2	7069	487.56	343.43	(334.81,352.05)	1.10	634
3	7740	520.14	363.20	(354.36,372.04)	1.16	1078
4	8052	525.30	371.46	(362.63,380.28)	1.19	1275
Most Deprived	7740	489.07	380.65	(371.57,389.72)	1.22	1383
WALES	36486	489.34	355.13	(351.20,359.05)		
1998-2002						
Deprivation Quintile	Total Cases	CR	EASR	95% Confidence Interval	EASR Ratio	Excess Cases
Affluent	6645	456.82	335.64	(327.12,344.15)	1.00	0
2	7599	514.27	356.43	(347.83,365.02)	1.06	443
3	7981	532.12	363.74	(355.06,372.41)	1.08	616
4	8165	535.67	374.02	(365.22,382.80)	1.11	838
Most Deprived	7817	505.51	385.63	(376.49,394.76)	1.15	1013
WALES	38207	509.24	363.46	(359.55,367.37)		
2003-2007						
Deprivation Quintile	Total Cases	CR	EASR	95% Confidence Interval	EASR Ratio	Excess Cases
Affluent	7482	498.66	356.28	(347.80,364.74)	1.00	0
2	8255	547.08	367.42	(358.93,375.90)	1.03	250
3	8486	560.48	378.41	(369.70,387.11)	1.06	496
4	8521	560.19	384.50	(375.65,393.34)	1.08	625
Most Deprived	8087	526.88	404.68	(395.21,414.14)	1.14	967
WALES	40831	538.71	377.54	(373.62,381.45)		



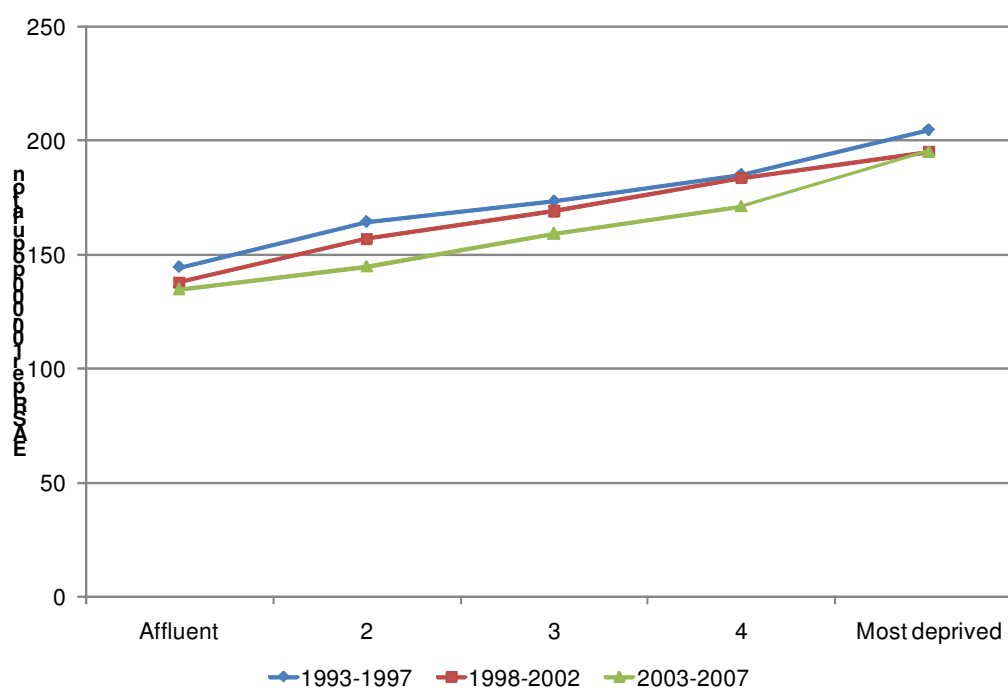
**MORTALITY: All Malignancies excluding non melanoma skin cancer***ICD10 codes: C00-C97 excluding C44*

MALES						
1993-1997						
Deprivation Quintile	Total Cases	CR	EASR	95% Confidence Interval	EASR Ratio	Excess Deaths
Affluent	3383	254.83	209.32	(202.18,216.45)	1.00	0
2	4186	304.02	239.29	(231.94,246.64)	1.14	524
3	4648	334.03	261.61	(253.96,269.26)	1.25	929
4	5070	353.42	288.89	(280.81,296.97)	1.38	1397
Most Deprived	4984	337.27	304.84	(296.27,313.42)	1.46	1562
WALES	22271	317.78	261.20	(257.72,264.68)		
1998-2002						
Deprivation Quintile	Total Cases	CR	EASR	95% Confidence Interval	EASR Ratio	Excess Deaths
Affluent	3482	251.39	194.51	(187.98,201.04)	1.00	0
2	4025	286.29	211.78	(205.15,218.40)	1.09	328
3	4401	312.77	232.94	(225.95,239.94)	1.20	726
4	4773	334.39	260.52	(253.02,268.01)	1.34	1209
Most Deprived	4798	333.40	286.37	(278.17,294.57)	1.47	1539
WALES	21479	304.04	236.57	(233.36,239.77)		
2003-2007						
Deprivation Quintile	Total Cases	CR	EASR	95% Confidence Interval	EASR Ratio	Excess Deaths
Affluent	3647	250.17	182.01	(176.02,188.01)	1.00	0
2	4410	303.43	208.23	(201.97,214.49)	1.14	555
3	4641	321.73	226.58	(219.93,233.23)	1.24	913
4	4677	325.53	241.20	(234.17,248.24)	1.33	1148
Most Deprived	4764	334.29	279.53	(271.46,287.59)	1.54	1662
WALES	22139	306.83	225.62	(222.60,228.64)		



## FEMALES

1993-1997						
Deprivation Quintile	Total Cases	CR	EASR	95% Confidence Interval	EASR Ratio	Excess Deaths
Affluent	3032	216.14	144.53	(139.01,150.05)	1.00	0
2	3804	262.37	164.58	(158.89,170.27)	1.14	463
3	4208	282.78	173.63	(167.85,179.41)	1.20	705
4	4494	293.18	185.24	(179.32,191.16)	1.28	988
Most Deprived	4559	288.07	204.94	(198.54,211.33)	1.42	1344
WALES	20097	269.53	175.14	(172.52,177.77)		
1998-2002						
Deprivation Quintile	Total Cases	CR	EASR	95% Confidence Interval	EASR Ratio	Excess Deaths
Affluent	3098	212.98	138.02	(132.82,143.21)	1.00	0
2	3892	263.40	157.13	(151.77,162.49)	1.14	473
3	4313	287.56	169.32	(163.75,174.88)	1.23	797
4	4586	300.86	183.75	(177.93,189.58)	1.33	1141
Most Deprived	4409	285.12	195.29	(189.07,201.51)	1.41	1293
WALES	20298	270.54	168.95	(166.43,171.48)		
2003-2007						
Deprivation Quintile	Total Cases	CR	EASR	95% Confidence Interval	EASR Ratio	Excess Deaths
Affluent	3264	217.54	134.92	(130.02,139.82)	1.00	0
2	3861	255.88	144.78	(139.82,149.73)	1.07	263
3	4220	278.72	159.36	(154.05,164.66)	1.18	647
4	4445	292.23	171.18	(165.65,176.71)	1.27	941
Most Deprived	4413	287.51	195.51	(189.24,201.79)	1.45	1368
WALES	20203	266.55	160.34	(157.94,162.74)		



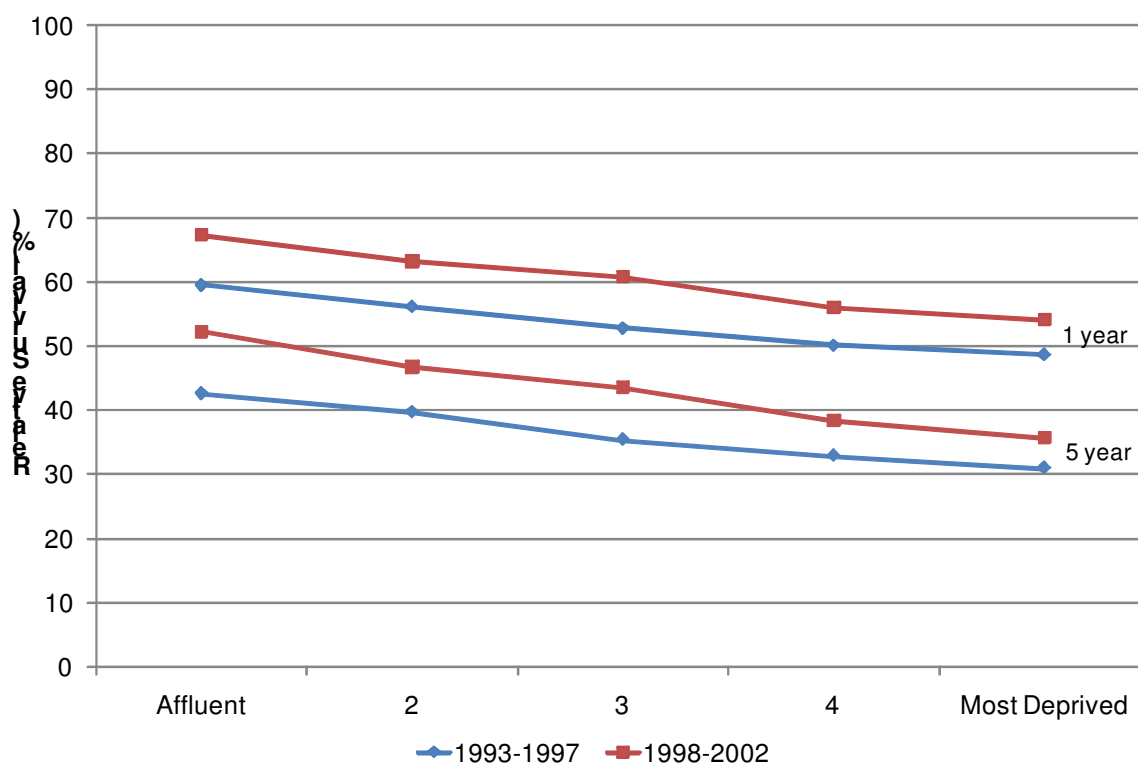


**SURVIVAL: All Malignancies excluding non melanoma skin cancer***ICD10 codes: C00-C97 excluding C44***MALES****1993-1997**

Deprivation Quintile	One year survival			Five year survival			Median Survival
	Obs	Rel	95% CI	Obs	Rel	95% CI	
Affluent	56.49	59.60	(58.12, 61.05)	32.78	42.66	(41.00, 44.31)	1.54
2	53.10	56.18	(54.78, 57.54)	30.08	39.80	(38.26, 41.33)	1.26
3	50.06	52.84	(51.50, 54.16)	26.99	35.45	(34.03, 36.88)	1.01
4	47.63	50.21	(48.93, 51.48)	25.03	32.89	(31.55, 34.23)	0.88
Most Deprived	46.34	48.69	(47.41, 49.97)	23.86	30.96	(29.64, 32.28)	0.82
WALES	50.35	53.10	(52.49, 53.70)	27.42	35.91	(35.26, 36.56)	1.04

**1998-2002**

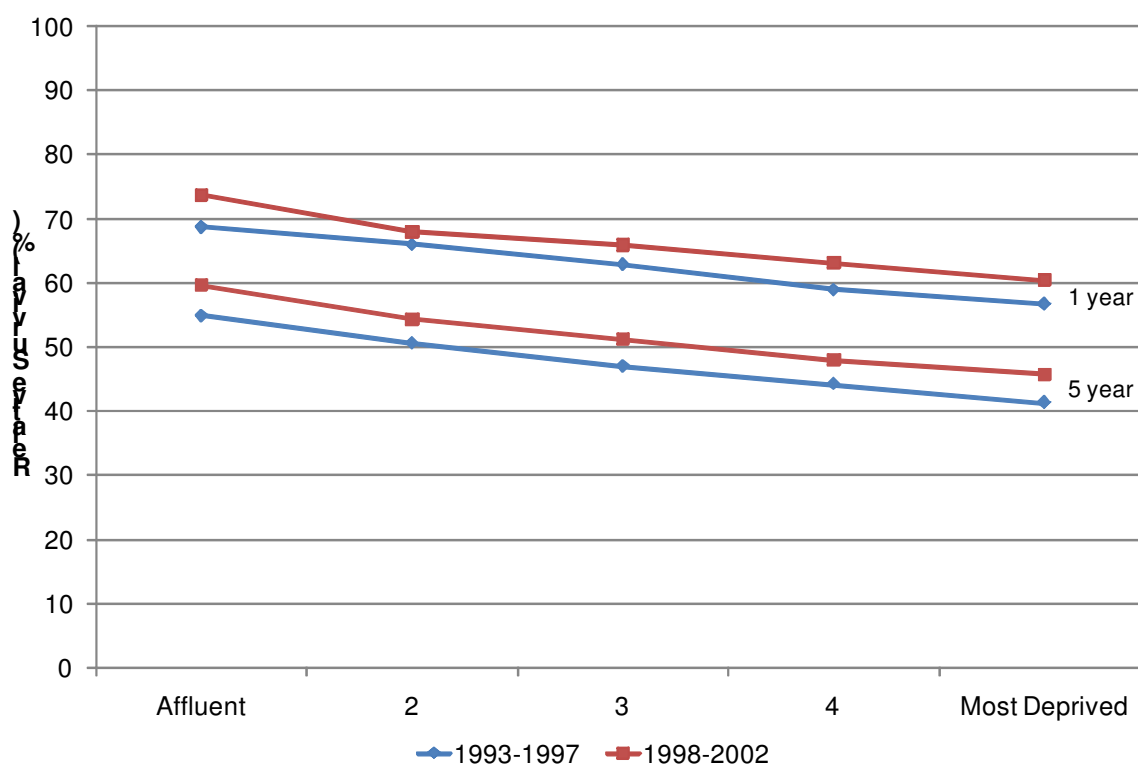
Deprivation Quintile	One year survival			Five year survival			Median Survival
	Obs	Rel	95% CI	Obs	Rel	95% CI	
Affluent	63.87	67.33	(65.99, 68.63)	41.32	52.31	(50.74, 53.86)	2.72
2	60.06	63.26	(61.98, 64.50)	36.87	46.85	(45.40, 48.29)	1.99
3	57.93	60.88	(59.61, 62.12)	34.30	43.65	(42.24, 45.06)	1.70
4	53.34	56.00	(54.73, 57.25)	30.31	38.49	(37.13, 39.85)	1.23
Most Deprived	51.75	54.14	(52.86, 55.40)	28.69	35.78	(34.45, 37.12)	1.12
WALES	57.18	60.07	(59.49, 60.64)	34.07	43.10	(42.46, 43.74)	1.63



## FEMALES

1993-1997							
Deprivation Quintile	One year survival			Five year survival			Median Survival
	Obs	Rel	95% CI	Obs	Rel	95% CI	
Affluent	66.10	68.80	(67.40, 70.16)	46.83	54.99	(53.40, 56.56)	3.90
2	63.19	66.07	(64.75, 67.35)	42.61	50.69	(49.21, 52.15)	2.93
3	60.27	62.96	(61.68, 64.20)	39.46	47.05	(45.66, 48.44)	2.28
4	56.50	59.01	(57.75, 60.25)	37.12	44.26	(42.90, 45.60)	1.75
Most Deprived	54.57	56.74	(55.45, 58.00)	35.00	41.32	(39.96, 42.67)	1.55
WALES	59.75	62.32	(61.74, 62.90)	39.81	47.23	(46.59, 47.86)	2.26

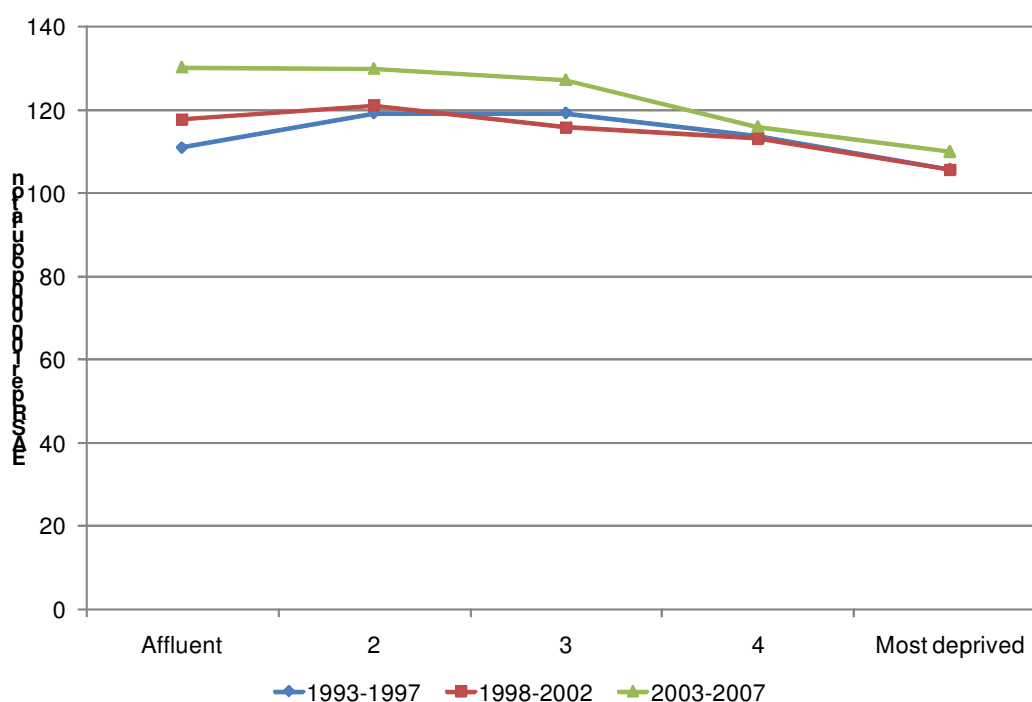
1998-2002							
Deprivation Quintile	One year survival			Five year survival			Median Survival
	Obs	Rel	95% CI	Obs	Rel	95% CI	
Affluent	70.88	73.78	(72.52, 75.00)	51.20	59.66	(58.17, 61.11)	5.57
2	65.22	68.07	(66.82, 69.28)	46.29	54.38	(52.97, 55.77)	3.69
3	63.21	66.01	(64.78, 67.21)	43.35	51.26	(49.88, 52.62)	2.99
4	60.58	63.22	(62.00, 64.42)	40.49	48.00	(46.65, 49.33)	2.31
Most Deprived	58.21	60.51	(62.81, 65.26)	38.60	45.79	(44.41, 47.16)	1.95
WALES	63.38	66.07	(65.51, 66.62)	43.74	51.57	(50.94, 52.19)	3.01



## INCIDENCE: Female Breast Cancer

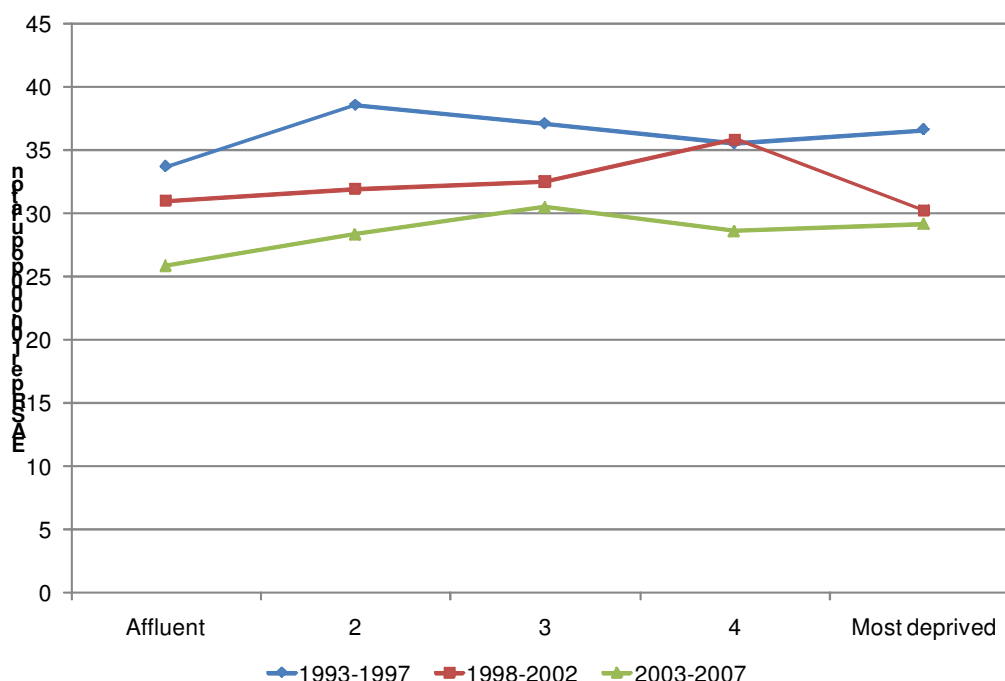
ICD10 codes: C50

1993-1997						
Deprivation Quintile	Total Cases	CR	EASR	95% Confidence Interval	EASR Ratio	Excess Cases
Affluent	1868	133.16	110.97	(105.69,116.24)	1.00	0
2	2215	152.77	119.24	(113.95,124.53)	1.07	154
3	2231	149.93	119.23	(113.89,124.55)	1.07	154
4	2166	141.31	113.84	(108.68,118.99)	1.03	55
Most Deprived	1928	121.83	105.67	(100.65,110.68)	0.95	-97
WALES	10408	139.59	114.01	(111.67,116.34)		
1998-2002						
Deprivation Quintile	Total Cases	CR	EASR	95% Confidence Interval	EASR Ratio	Excess Cases
Affluent	2153	148.01	117.84	(112.65,123.01)	1.00	0
2	2291	155.05	121.19	(115.96,126.42)	1.03	63
3	2272	151.48	115.93	(110.82,121.04)	0.98	-37
4	2228	146.17	113.36	(108.31,118.40)	0.96	-88
Most Deprived	1935	125.13	105.76	(100.75,110.76)	0.90	-221
WALES	10879	145.00	115.05	(112.75,117.33)		
2003-2007						
Deprivation Quintile	Total Cases	CR	EASR	95% Confidence Interval	EASR Ratio	Excess Cases
Affluent	2529	168.55	130.15	(124.90,135.39)	1.00	0
2	2652	175.76	129.79	(124.58,135.00)	1.00	-7
3	2550	168.42	127.15	(121.91,132.39)	0.98	-60
4	2319	152.46	116.01	(110.95,121.05)	0.89	-283
Most Deprived	1984	129.26	110.10	(104.95,115.24)	0.85	-361
WALES	12034	158.77	122.91	(120.59,125.22)		



**MORTALITY: Female Breast Cancer****ICD10 codes: C50**

1993-1997						
Deprivation Quintile	Total Cases	CR	EASR	95% Confidence Interval	EASR Ratio	Excess Deaths
Affluent	636	45.34	33.68	(30.89,36.47)	1.00	0
2	802	55.32	38.59	(35.70,41.48)	1.15	102
3	802	53.90	37.12	(34.29,39.95)	1.10	74
4	778	50.76	35.57	(32.84,38.30)	1.06	41
Most Deprived	751	47.45	36.64	(33.81,39.46)	1.09	61
WALES	3769	50.55	36.38	(35.12,37.64)		
1998-2002						
Deprivation Quintile	Total Cases	CR	EASR	95% Confidence Interval	EASR Ratio	Excess Deaths
Affluent	631	43.38	31.02	(28.45,33.59)	1.00	0
2	721	48.79	31.98	(29.45,34.51)	1.03	22
3	757	50.47	32.55	(29.99,35.11)	1.05	36
4	819	53.73	35.87	(33.18,38.56)	1.16	111
Most Deprived	634	41.00	30.25	(27.70,32.80)	0.98	-16
WALES	3562	47.48	32.44	(31.28,33.59)		
2003-2007						
Deprivation Quintile	Total Cases	CR	EASR	95% Confidence Interval	EASR Ratio	Excess Deaths
Affluent	588	39.19	25.87	(23.67,28.08)	1.00	0
2	703	46.59	28.35	(26.07,30.63)	1.10	61
3	737	48.68	30.51	(28.08,32.94)	1.18	112
4	677	44.51	28.61	(26.24,30.99)	1.11	65
Most Deprived	621	40.46	29.17	(26.67,31.67)	1.13	70
WALES	3326	43.88	28.46	(27.41,29.51)		



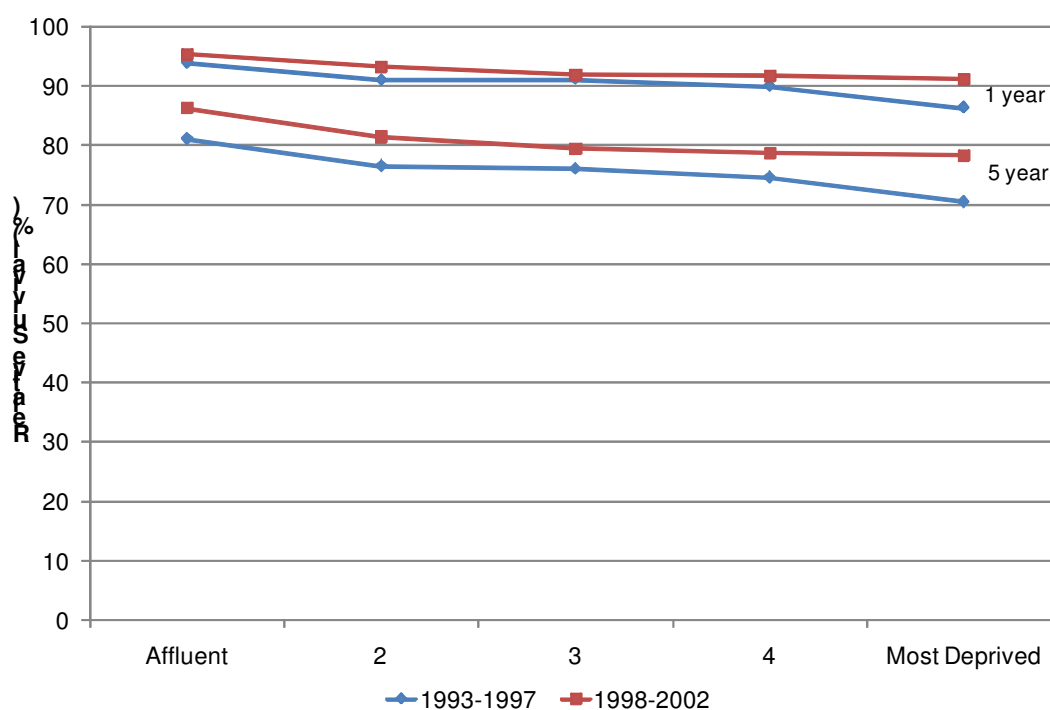
## SURVIVAL: Female Breast Cancer

ICD10 codes: C50

1993-1997							
Deprivation Quintile	One year survival			Five year survival			Median Survival
	Obs	Rel	95% CI	Obs	Rel	95% CI	
Affluent	90.76	93.96	(92.47,95.16)	70.95	81.16	(78.80,83.29)	13.83
2	87.41	91.05	(89.48,92.39)	65.29	76.58	(74.21,78.77)	11.23
3	87.51	91.19	(89.62,92.53)	64.75	76.10	(73.77,78.26)	10.93
4	86.23	89.98	(88.32,91.41)	64.04	74.67	(72.25,76.92)	9.81
Most Deprived	83.01	86.35	(84.44,88.05)	61.05	70.51	(67.92,72.93)	8.56
WALES	86.99	90.55	(89.84,91.21)	65.38	75.85	(74.79,76.87)	10.71

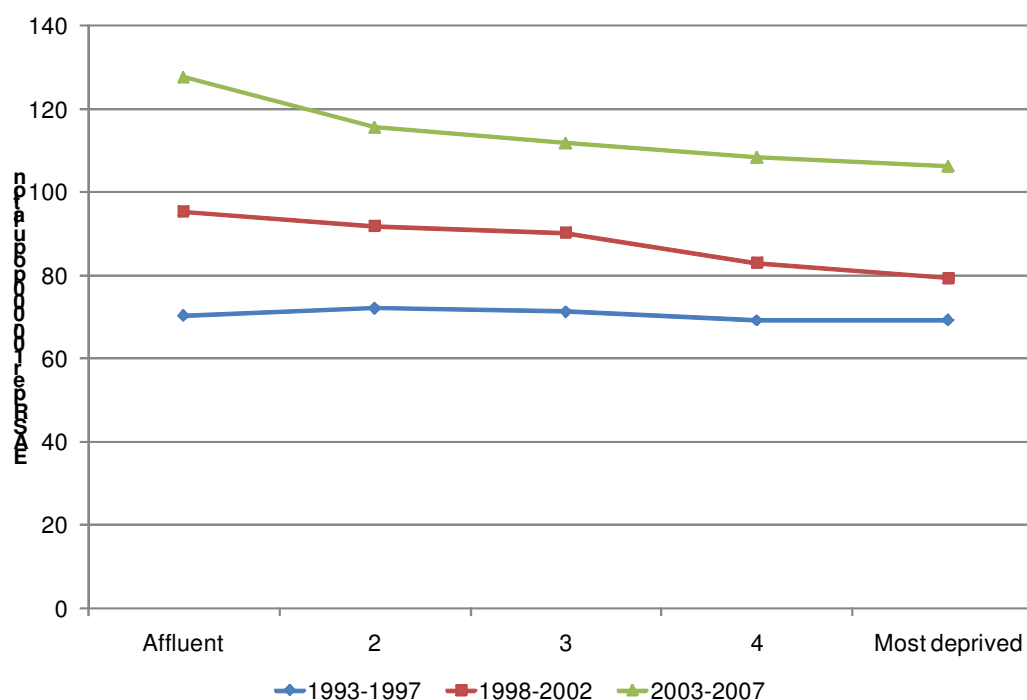
1998-2002							
Deprivation Quintile	One year survival			Five year survival			Median Survival
	Obs	Rel	95% CI	Obs	Rel	95% CI	
Affluent	92.40	95.44	(94.19,96.43)	75.78	86.29	(84.24,88.09)	NA
2	89.97	93.36	(91.96,94.53)	70.83	81.44	(79.28,83.40)	NA
3	88.11	91.96	(90.45,93.24)	68.00	79.47	(77.21,81.54)	NA
4	87.87	91.85	(90.30,93.16)	67.11	78.71	(76.40,80.82)	NA
Most Deprived	87.73	91.25	(89.57,92.67)	66.62	78.35	(75.84,80.64)	NA
WALES	89.23	92.84	(92.21,93.42)	69.70	80.96	(79.98,81.91)	NA



## INCIDENCE: Prostate Cancer

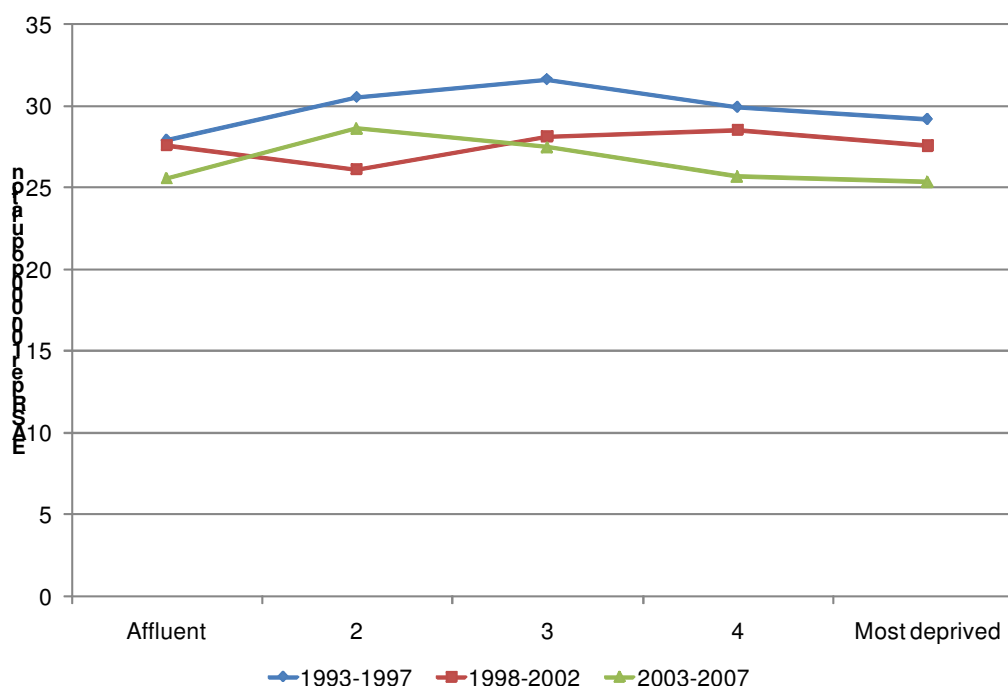
ICD10 codes: C61

1993-1997						
Deprivation Quintile	Total Cases	CR	EASR	95% Confidence Interval	EASR Ratio	Excess Cases
Affluent	1179	88.81	70.35	(66.28,74.42)	1.00	0
2	1307	94.92	72.19	(68.21,76.16)	1.03	33
3	1329	95.51	71.36	(67.45,75.26)	1.01	19
4	1253	87.34	69.22	(65.30,73.13)	0.98	-20
Most Deprived	1171	79.24	69.24	(65.19,73.29)	0.98	-19
WALES	6239	89.02	70.50	(68.71,72.27)		
1998-2002						
Deprivation Quintile	Total Cases	CR	EASR	95% Confidence Interval	EASR Ratio	Excess Cases
Affluent	1722	124.32	95.33	(90.77,99.88)	1.00	0
2	1784	126.89	91.96	(87.63,96.28)	0.96	-65
3	1743	123.87	90.32	(86.01,94.63)	0.95	-97
4	1580	110.69	83.09	(78.91,87.25)	0.87	-233
Most Deprived	1383	96.10	79.47	(75.20,83.72)	0.83	-276
WALES	8212	116.24	88.19	(86.25,90.12)		
2003-2007						
Deprivation Quintile	Total Cases	CR	EASR	95% Confidence Interval	EASR Ratio	Excess Cases
Affluent	2538	174.10	127.73	(122.70,132.75)	1.00	0
2	2466	169.67	115.60	(110.97,120.22)	0.91	-259
3	2299	159.37	111.77	(107.11,116.41)	0.88	-328
4	2118	147.42	108.33	(103.63,113.02)	0.85	-379
Most Deprived	1824	127.99	106.22	(101.25,111.18)	0.83	-369
WALES	11245	155.84	114.24	(112.09,116.38)		



**MORTALITY: Prostate Cancer***ICD10 codes: C61*

1993-1997						
Deprivation Quintile	Total Cases	CR	EASR	95% Confidence Interval	EASR Ratio	Excess Deaths
Affluent	466	35.10	27.91	(25.33,30.49)	1.00	0
2	554	40.24	30.52	(27.93,33.11)	1.09	47
3	587	42.18	31.61	(29.34,21.00)	1.13	69
4	546	38.06	29.93	(27.35,32.50)	1.07	37
Most Deprived	481	32.55	29.19	(26.51,31.88)	1.05	21
WALES	2634	37.58	29.90	(28.73,31.06)		
1998-2002						
Deprivation Quintile	Total Cases	CR	EASR	95% Confidence Interval	EASR Ratio	Excess Deaths
Affluent	515	37.18	27.60	(25.18,30.02)	1.00	0
2	520	36.99	26.14	(23.86,28.42)	0.95	-29
3	562	39.94	28.13	(25.77,30.50)	1.02	11
4	546	38.25	28.54	(26.10,30.98)	1.03	18
Most Deprived	476	33.08	27.58	(25.05,30.11)	1.00	0
WALES	2619	37.07	27.59	(26.51,28.66)		
2003-2007						
Deprivation Quintile	Total Cases	CR	EASR	95% Confidence Interval	EASR Ratio	Excess Deaths
Affluent	548	37.59	25.55	(23.37,27.73)	1.00	0
2	657	45.21	28.64	(26.41,30.86)	1.12	71
3	613	42.50	27.46	(25.25,29.68)	1.07	43
4	540	37.59	25.67	(23.46,27.87)	1.00	2
Most Deprived	478	33.54	25.34	(23.02,27.67)	0.99	-4
WALES	2836	39.30	26.61	(25.61,27.60)		

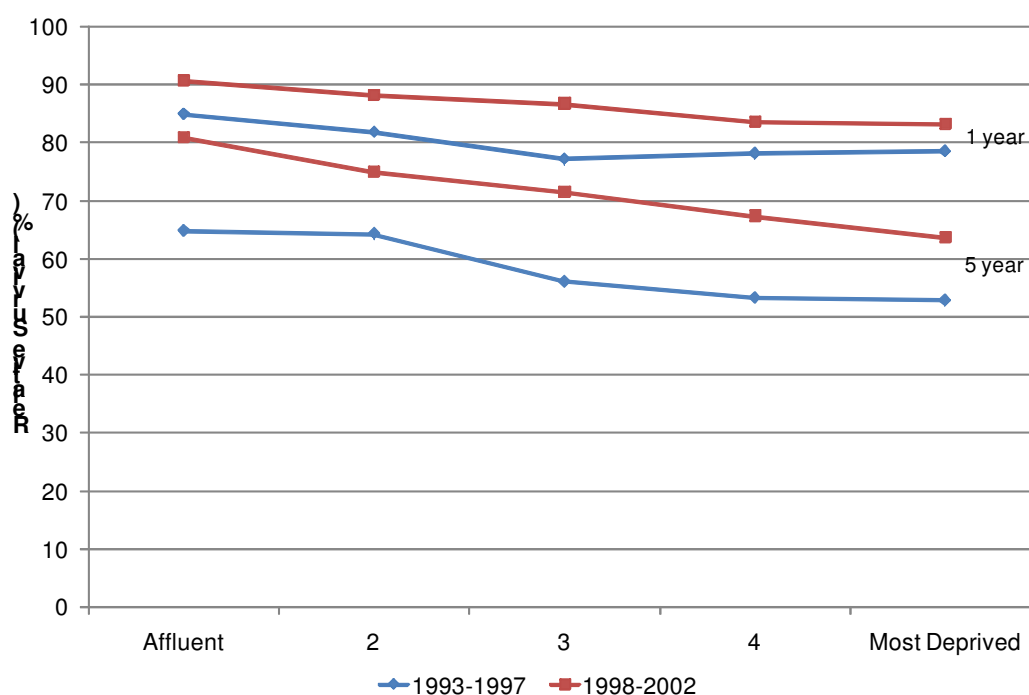


**SURVIVAL: Prostate Cancer***ICD10 codes: C61*

1993-1997							
Deprivation Quintile	One year survival			Five year survival			Median Survival
	Obs	Rel	95% CI	Obs	Rel	95% CI	
<b>Affluent</b>	78.09	84.92	(75.37,80.55)	44.53	64.81	(41.41,47.60)	4.22
<b>2</b>	75.55	81.88	(72.86,78.02)	43.26	64.31	(40.27,46.21)	3.79
<b>3</b>	71.18	77.29	(68.39,73.76)	37.62	56.12	(34.76,40.48)	3.07
<b>4</b>	71.54	78.24	(68.72,74.16)	36.06	53.36	(33.18,38.95)	2.89
<b>Most Deprived</b>	72.83	78.62	(69.90,75.53)	36.31	52.91	(33.28,39.34)	3.02
<b>WALES</b>	73.78	80.12	(72.56,74.96)	39.54	58.31	(38.20,40.86)	3.33

1998-2002							
Deprivation Quintile	One year survival			Five year survival			Median Survival
	Obs	Rel	95% CI	Obs	Rel	95% CI	
<b>Affluent</b>	84.30	90.77	(82.32,86.08)	58.63	80.95	(56.05,61.12)	6.93
<b>2</b>	81.98	88.24	(79.94,83.84)	53.17	75.02	(50.61,55.65)	5.71
<b>3</b>	80.60	86.82	(78.47,82.54)	51.74	71.62	(49.14,54.28)	5.29
<b>4</b>	77.73	83.68	(75.78,79.88)	46.63	67.44	(43.91,49.30)	4.50
<b>Most Deprived</b>	77.60	83.27	(75.06,79.92)	45.60	63.73	(42.68,48.47)	4.11
<b>WALES</b>	80.64	86.76	(79.68,81.55)	51.51	72.31	(50.32,52.69)	5.35



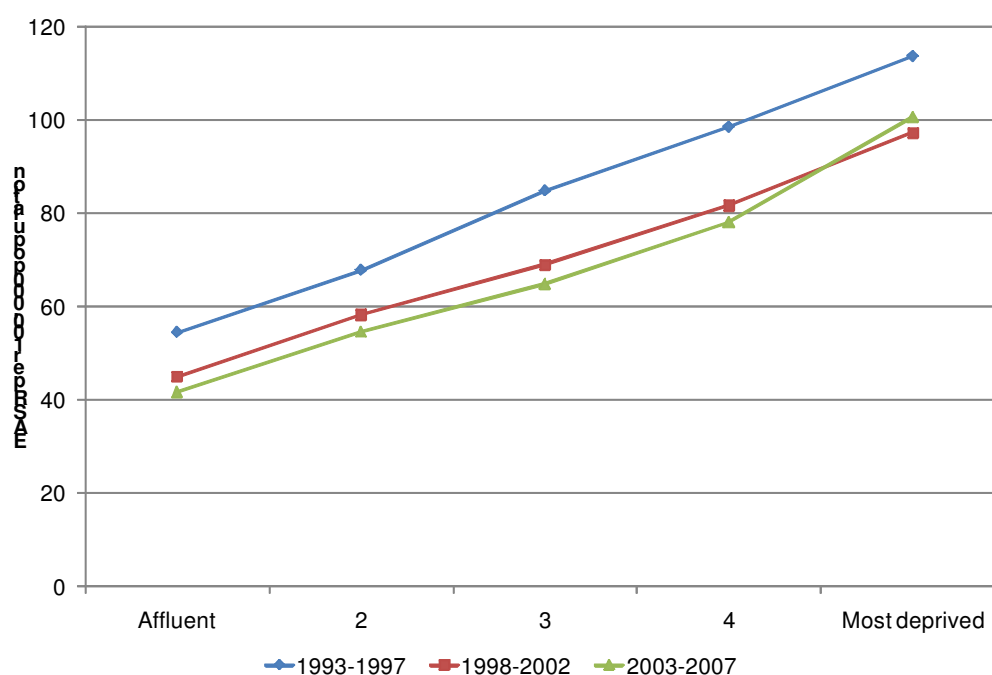


## INCIDENCE: Lung Cancer

ICD10 codes: C33-C34

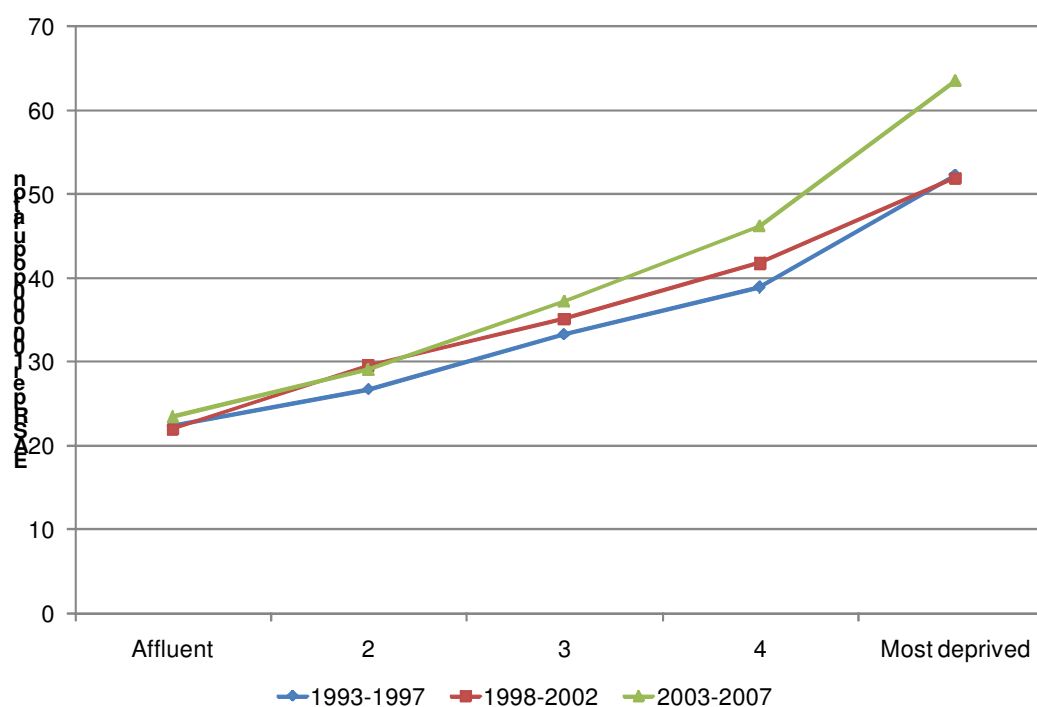
## MALES

1993-1997						
Deprivation Quintile	Total Cases	CR	EASR	95% Confidence Interval	EASR Ratio	Excess Cases
Affluent	883	66.51	54.42	(50.77,58.06)	1.00	0
2	1199	87.08	67.79	(63.88,71.69)	1.25	236
3	1506	108.23	84.86	(80.48,89.23)	1.56	540
4	1741	121.36	98.57	(93.85,103.29)	1.81	780
Most Deprived	1877	127.02	113.75	(108.51,118.97)	2.09	979
WALES	7206	102.82	84.05	(82.07,86.02)		
1998-2002						
Deprivation Quintile	Total Cases	CR	EASR	95% Confidence Interval	EASR Ratio	Excess Cases
Affluent	810	58.48	44.95	(41.81,48.09)	1.00	0
2	1119	79.59	58.17	(54.70,61.63)	1.29	254
3	1292	91.82	68.92	(65.09,72.75)	1.53	449
4	1504	105.37	81.74	(77.53,85.94)	1.82	677
Most Deprived	1630	113.27	97.25	(92.45,102.03)	2.16	876
WALES	6355	89.96	69.85	(68.10,71.59)		
2003-2007						
Deprivation Quintile	Total Cases	CR	EASR	95% Confidence Interval	EASR Ratio	Excess Cases
Affluent	839	57.55	41.66	(38.78,44.52)	1.00	0
2	1157	79.61	54.56	(51.35,57.76)	1.31	274
3	1307	90.61	64.78	(61.19,68.37)	1.56	467
4	1508	104.96	78.03	(74.00,82.04)	1.87	703
Most Deprived	1686	118.31	100.52	(95.63,105.41)	2.41	987
WALES	6497	90.04	66.69	(65.03,68.33)		



## FEMALES

1993-1997						
Deprivation Quintile	Total Cases	CR	EASR	95% Confidence Interval	EASR Ratio	Excess Cases
Affluent	470	33.50	22.43	(20.27,24.58)	1.00	0
2	603	41.59	26.76	(24.46,29.04)	1.19	98
3	777	52.22	33.30	(30.77,35.83)	1.48	254
4	885	57.74	38.90	(36.13,41.65)	1.73	375
Most Deprived	1083	68.43	52.26	(48.95,55.55)	2.33	618
WALES	3818	51.21	34.90	(33.71,36.08)		
1998-2002						
Deprivation Quintile	Total Cases	CR	EASR	95% Confidence Interval	EASR Ratio	Excess Cases
Affluent	497	34.17	22.05	(19.99,24.10)	1.00	0
2	688	46.56	29.61	(27.24,31.98)	1.34	176
3	815	54.34	35.18	(32.57,37.78)	1.60	304
4	961	63.05	41.81	(38.96,44.65)	1.90	454
Most Deprived	1105	71.46	51.90	(48.64,55.16)	2.35	635
WALES	4066	54.19	36.06	(34.87,37.24)		
2003-2007						
Deprivation Quintile	Total Cases	CR	EASR	95% Confidence Interval	EASR Ratio	Excess Cases
Affluent	556	37.06	23.48	(21.42,25.53)	1.00	0
2	720	47.72	29.11	(26.85,31.37)	1.24	139
3	926	61.16	37.22	(34.63,39.81)	1.59	342
4	1090	71.66	46.21	(43.25,49.16)	1.97	536
Most Deprived	1328	86.52	63.54	(59.87,67.20)	2.71	837
WALES	4620	60.95	39.31	(38.10,40.52)		



## MORTALITY: Lung Cancer

ICD10 codes: C33-C34

## MALES

## 1993-1997

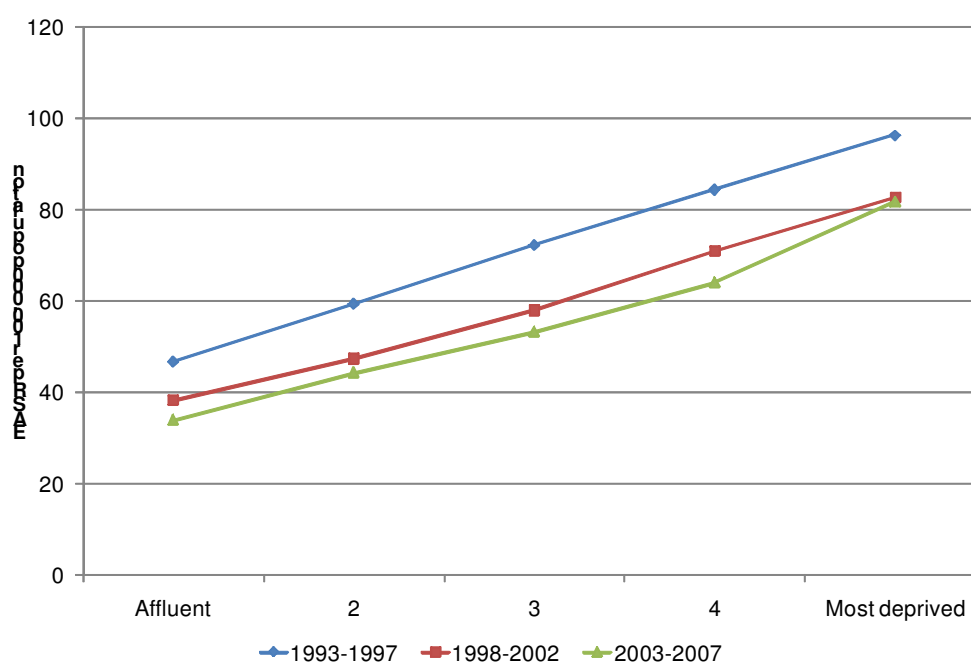
Deprivation Quintile	Total Cases	CR	EASR	95% Confidence Interval	EASR Ratio	Excess Deaths
Affluent	765	57.62	46.71	(43.35,50.07)	1.00	0
2	1058	76.84	59.40	(55.76,63.04)	1.27	226
3	1298	93.28	72.31	(68.30,76.33)	1.55	460
4	1501	104.63	84.43	(80.08,88.79)	1.81	671
Most Deprived	1593	107.80	96.35	(91.54,101.16)	2.06	821
WALES	6215	88.68	71.99	(70.17,73.81)		

## 1998-2002

Deprivation Quintile	Total Cases	CR	EASR	95% Confidence Interval	EASR Ratio	Excess Deaths
Affluent	696	50.25	38.31	(35.43,41.20)	1.00	0
2	917	65.22	47.40	(44.28,50.52)	1.24	176
3	1104	78.46	57.96	(54.48,61.45)	1.51	374
4	1313	91.99	70.98	(67.07,74.89)	1.85	604
Most Deprived	1394	96.87	82.64	(78.24,87.05)	2.16	748
WALES	5424	76.78	59.17	(57.57,60.78)		

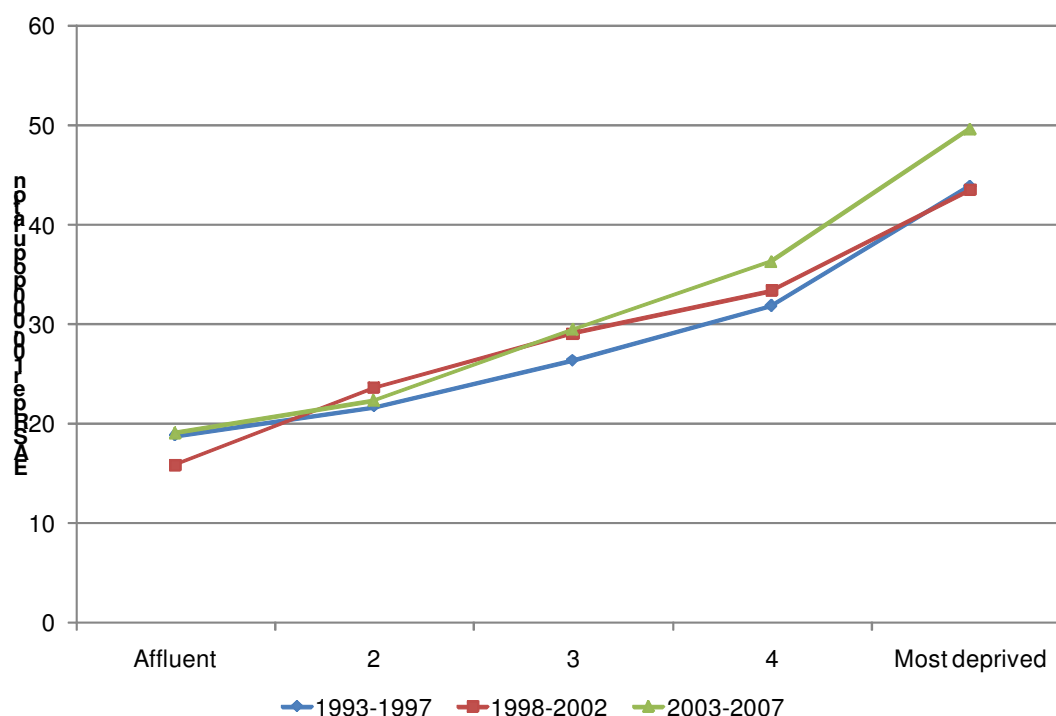
## 2003-2007

Deprivation Quintile	Total Cases	CR	EASR	95% Confidence Interval	EASR Ratio	Excess Deaths
Affluent	693	47.54	33.98	(31.40,36.55)	1.00	0
2	952	65.50	44.34	(41.47,47.22)	1.31	223
3	1095	75.91	53.31	(50.09,56.54)	1.57	397
4	1247	86.79	64.09	(60.45,67.73)	1.89	586
Most Deprived	1387	97.33	81.78	(77.40,86.17)	2.41	811
WALES	5374	74.48	54.51	(53.02,55.99)		



## FEMALES

1993-1997						
Deprivation Quintile	Total Cases	CR	EASR	95% Confidence Interval	EASR Ratio	Excess Deaths
Affluent	400	28.51	18.83	(16.87,20.80)	1.00	0
2	496	34.21	21.73	(19.68,23.78)	1.15	66
3	628	42.20	26.39	(24.17,28.61)	1.40	180
4	729	47.56	31.86	(29.37,34.35)	1.69	298
Most Deprived	943	59.59	43.92	(40.95,46.89)	2.33	539
WALES	3196	42.86	28.69	(27.63,29.75)		
1998-2002						
Deprivation Quintile	Total Cases	CR	EASR	95% Confidence Interval	EASR Ratio	Excess Deaths
Affluent	371	25.50	15.92	(14.20,17.64)	1.00	0
2	570	38.58	23.67	(21.58,25.75)	1.49	187
3	692	46.14	29.12	(26.78,31.47)	1.83	314
4	797	52.29	33.43	(30.92,35.94)	2.10	417
Most Deprived	948	61.31	43.52	(40.56,46.47)	2.73	601
WALES	3378	45.02	29.10	(28.05,30.15)		
2003-2007						
Deprivation Quintile	Total Cases	CR	EASR	95% Confidence Interval	EASR Ratio	Excess Deaths
Affluent	467	31.12	19.10	(17.28,20.92)	1.00	0
2	573	37.97	22.35	(20.39,24.30)	1.17	83
3	746	49.27	29.47	(27.18,31.76)	1.54	262
4	885	58.18	36.31	(33.73,38.89)	1.90	419
Most Deprived	1082	70.49	49.68	(46.49,52.86)	2.60	666
WALES	3753	49.52	30.92	(29.86,31.98)		



## SURVIVAL: Lung Cancer

ICD10 codes: C33-C34

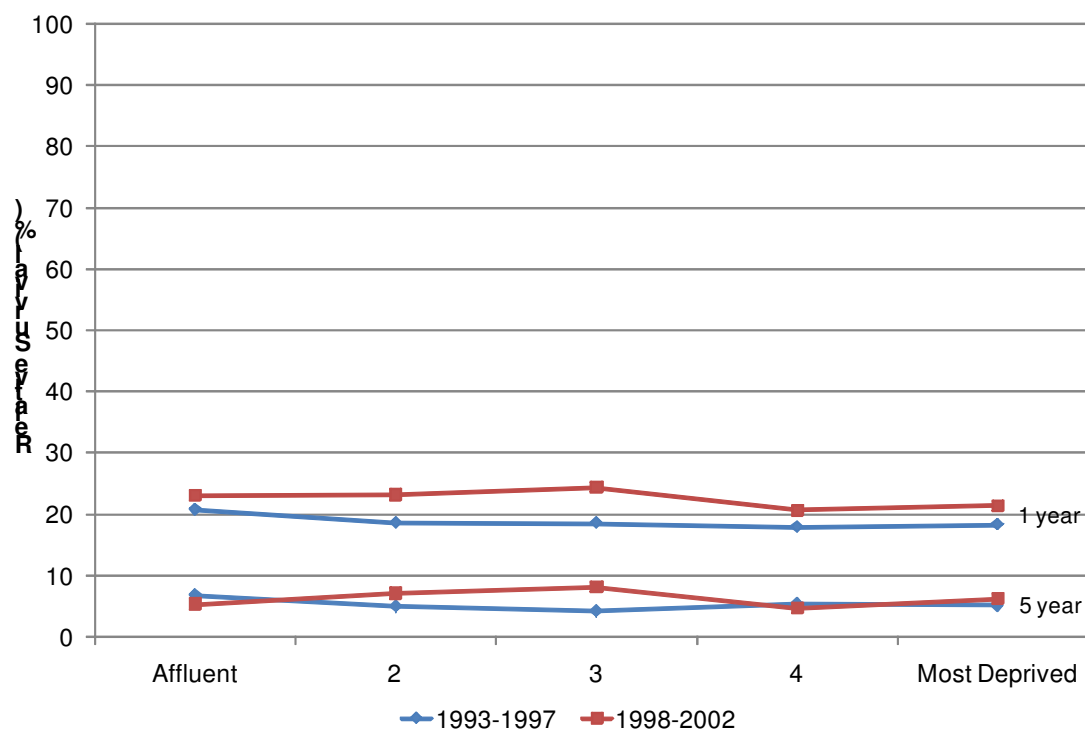
## MALES

## 1993-1997

Deprivation Quintile	One year survival			Five year survival			Median Survival
	Obs	Rel	95% CI	Obs	Rel	95% CI	
Affluent	19.86	20.85	(16.99,22.89)	5.29	6.76	(3.81,7.11)	0.30
2	17.68	18.64	(15.29,20.21)	3.74	4.96	(2.67,5.08)	0.24
3	17.76	18.61	(15.60,20.03)	3.26	4.21	(2.35,4.39)	0.22
4	17.09	17.93	(15.16,19.11)	4.20	5.40	(3.24,5.33)	0.21
Most Deprived	17.53	18.33	(15.64,19.52)	4.03	5.11	(3.12,5.11)	0.23
WALES	17.77	18.65	(16.79,18.78)	4.02	5.17	(3.53,4.55)	0.23

## 1998-2002

Deprivation Quintile	One year survival			Five year survival			Median Survival
	Obs	Rel	95% CI	Obs	Rel	95% CI	
Affluent	21.97	23.18	(18.79,25.32)	4.37	5.38	(2.98,6.14)	0.29
2	22.17	23.27	(19.48,24.98)	5.73	7.15	(4.32,7.14)	0.24
3	23.40	24.48	(20.86,26.04)	6.54	8.21	(5.15,8.15)	0.28
4	19.90	20.77	(17.68,22.22)	3.77	4.72	(2.81,4.94)	0.26
Most Deprived	20.68	21.54	(18.51,22.94)	5.08	6.20	(3.98,6.37)	0.28
WALES	21.48	22.47	(20.35,22.63)	5.10	6.33	(4.52,5.73)	0.27

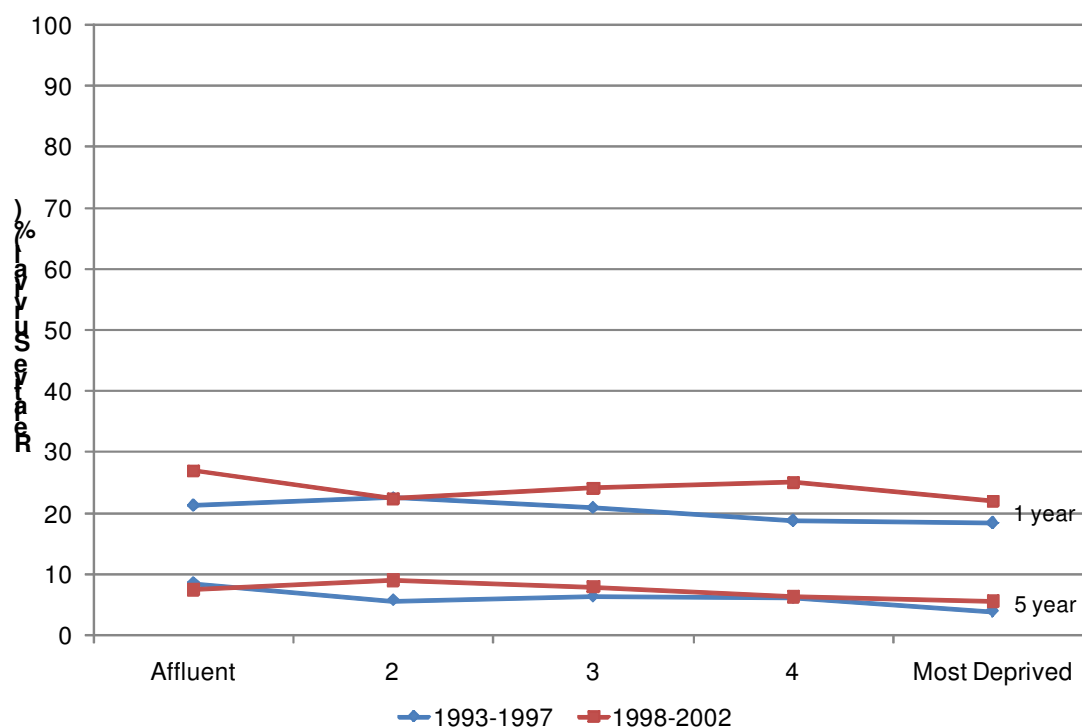


## FEMALES

1993-1997							
Deprivation Quintile	One year survival			Five year survival			Median Survival
	Obs	Rel	95% CI	Obs	Rel	95% CI	
Affluent	20.64	21.35	(16.70,24.88)	7.23	8.50	(4.91,10.14)	0.23
2	21.94	22.62	(18.28,25.83)	4.74	5.75	(3.08,6.92)	0.22
3	20.26	20.94	(17.13,23.59)	5.36	6.35	(3.76,7.35)	0.22
4	18.32	18.88	(15.53,21.30)	5.28	6.21	(3.80,7.10)	0.24
Most Deprived	17.91	18.46	(15.41,20.58)	3.48	3.97	(2.41,4.84)	0.24
WALES	19.44	20.06	(18.61, 21.55)	4.94	5.80	(4.21,5.75)	0.23

1998-2002							
Deprivation Quintile	One year survival			Five year survival			Median Survival
	Obs	Rel	95% CI	Obs	Rel	95% CI	
Affluent	26.12	27.03	(21.76,30.67)	6.39	7.49	(4.22,9.16)	0.34
2	21.67	22.45	(18.33,25.20)	7.93	9.07	(5.87,10.38)	0.26
3	23.55	24.23	(20.34,26.89)	6.66	8.01	(4.91,8.77)	0.29
4	24.41	25.18	(21.36,27.57)	5.51	6.39	(4.03,7.31)	0.30
Most Deprived	21.52	22.12	(18.85,24.30)	4.93	5.65	(3.63,6.50)	0.24
WALES	23.16	23.89	(21.71,24.65)	6.10	7.10	(5.31,6.97)	0.27

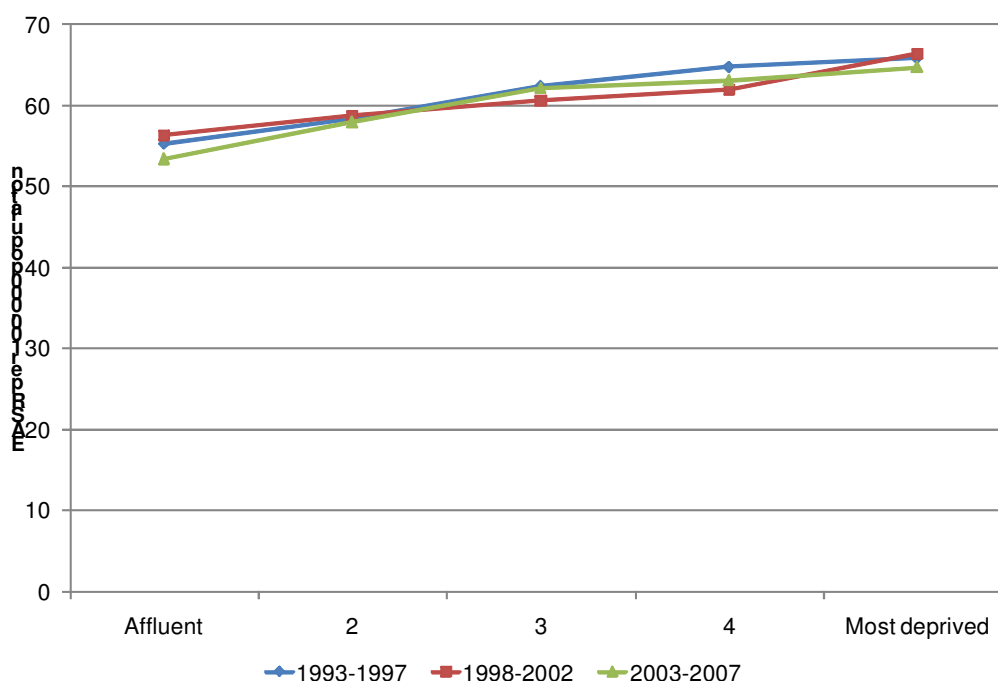


## INCIDENCE: Colorectal Cancer

ICD10 codes: C18-C20

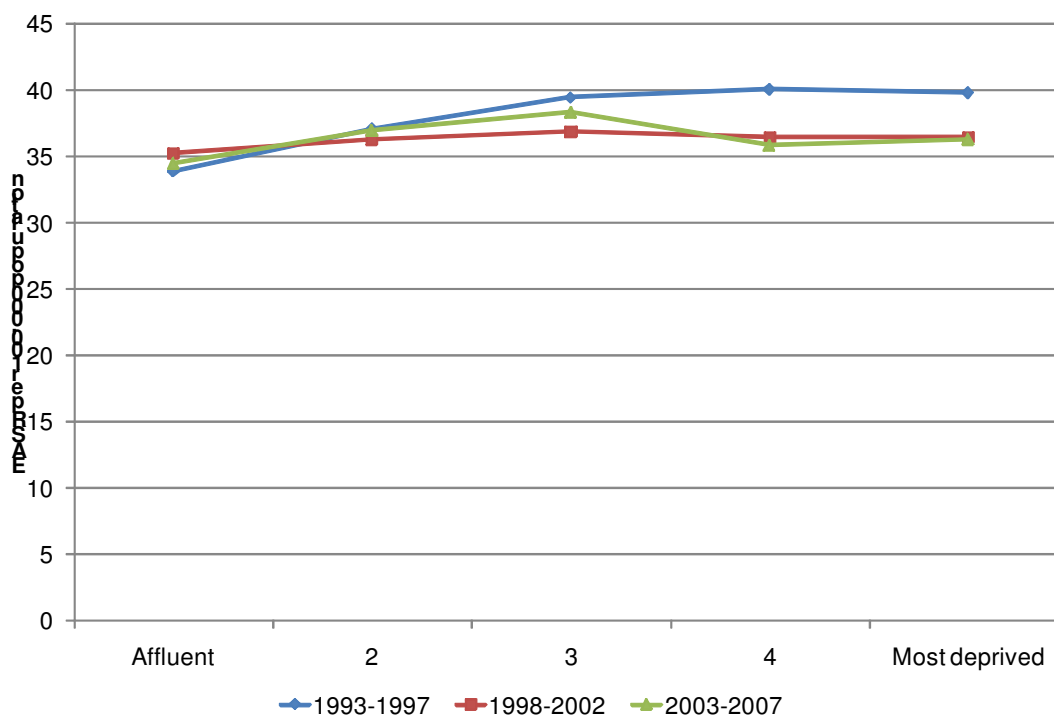
## MALES

1993-1997						
Deprivation Quintile	Total Cases	CR	EASR	95% Confidence Interval	EASR Ratio	Excess Cases
Affluent	875	65.91	55.28	(51.55,58.99)	1.00	0
2	995	72.26	58.33	(54.63,62.01)	1.06	52
3	1092	78.48	62.42	(58.63,66.20)	1.13	125
4	1120	78.07	64.80	(60.91,68.67)	1.17	165
Most Deprived	1071	72.47	65.86	(61.83,69.87)	1.19	172
WALES	5153	73.53	61.36	(59.65,63.06)		
1998-2002						
Deprivation Quintile	Total Cases	CR	EASR	95% Confidence Interval	EASR Ratio	Excess Cases
Affluent	992	71.62	56.34	(52.78,59.89)	1.00	0
2	1092	77.67	58.78	(55.23,62.32)	1.04	45
3	1121	79.67	60.65	(57.02,64.27)	1.08	80
4	1112	77.91	62.03	(58.31,65.73)	1.10	102
Most Deprived	1112	77.27	66.41	(62.43,70.38)	1.18	169
WALES	5429	76.85	60.80	(59.14,62.44)		
2003-2007						
Deprivation Quintile	Total Cases	CR	EASR	95% Confidence Interval	EASR Ratio	Excess Cases
Affluent	1044	71.62	53.44	(50.14,56.74)	1.00	0
2	1210	83.25	57.97	(54.63,61.30)	1.08	94
3	1246	86.38	62.13	(58.59,65.66)	1.16	174
4	1205	83.87	63.07	(59.42,66.70)	1.18	184
Most Deprived	1094	76.77	64.71	(60.79,68.63)	1.21	190
WALES	5799	80.37	60.09	(58.50,61.66)		



## FEMALES

1993-1997						
Deprivation Quintile	Total Cases	CR	EASR	95% Confidence Interval	EASR Ratio	Excess Cases
Affluent	741	52.82	33.91	(31.28,36.52)	1.00	0
2	872	60.14	37.10	(34.41,39.77)	1.09	75
3	1002	67.34	39.46	(36.75,42.16)	1.16	141
4	1006	65.63	40.08	(37.36,42.80)	1.18	155
Most Deprived	930	58.76	39.82	(37.05,42.58)	1.17	138
WALES	4551	61.04	38.16	(36.95,39.36)		
1998-2002						
Deprivation Quintile	Total Cases	CR	EASR	95% Confidence Interval	EASR Ratio	Excess Cases
Affluent	799	54.93	35.30	(32.68,37.91)	1.00	0
2	903	61.11	36.34	(33.77,38.90)	1.03	26
3	953	63.54	36.89	(34.30,39.47)	1.05	41
4	906	59.44	36.44	(33.83,39.04)	1.03	28
Most Deprived	846	54.71	36.48	(33.82,39.14)	1.03	27
WALES	4407	58.74	36.31	(35.14,37.47)		
2003-2007						
Deprivation Quintile	Total Cases	CR	EASR	95% Confidence Interval	EASR Ratio	Excess Cases
Affluent	829	55.25	34.49	(32.00,36.97)	1.00	0
2	934	61.90	36.97	(34.42,39.52)	1.07	63
3	984	64.99	38.37	(35.73,40.99)	1.11	99
4	906	59.56	35.85	(33.29,38.41)	1.04	34
Most Deprived	839	54.66	36.30	(33.62,38.98)	1.05	42
WALES	4492	59.27	36.41	(35.25,37.56)		



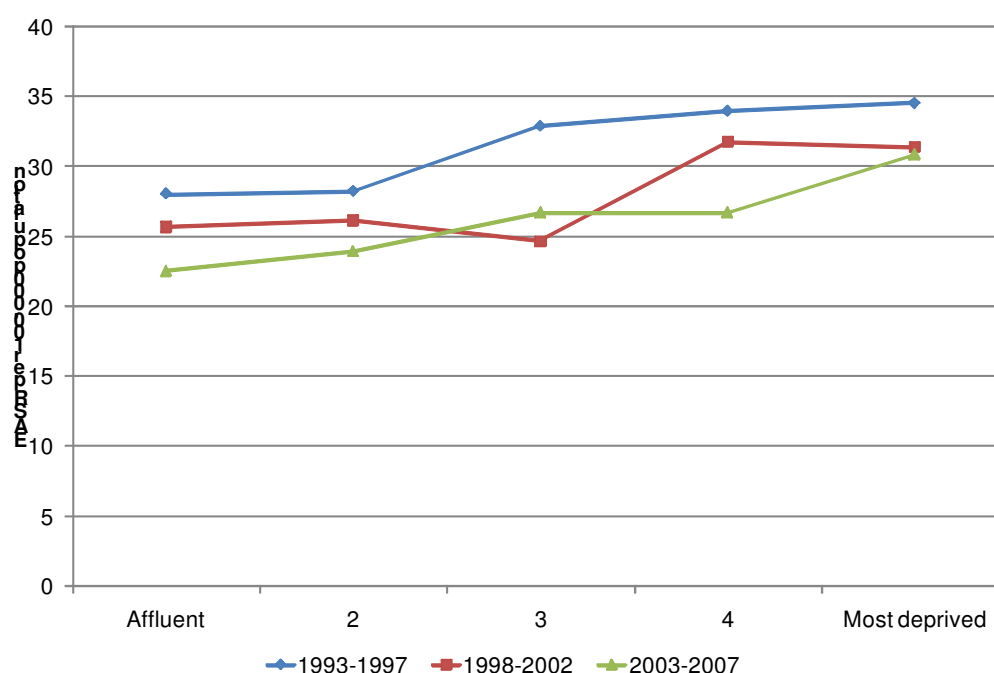


## MORTALITY: Colorectal Cancer

ICD10 codes: C18-C20

## MALES

1993-1997						
Deprivation Quintile	Total Cases	CR	EASR	95% Confidence Interval	EASR Ratio	Excess Deaths
Affluent	448	33.75	28.04	(25.40,30.68)	1.00	0
2	488	35.44	28.24	(25.69,30.80)	1.01	4
3	581	41.75	32.88	(30.15,35.62)	1.17	86
4	596	41.55	33.97	(31.18,36.77)	1.21	104
Most Deprived	566	38.30	34.56	(31.65,37.46)	1.23	107
WALES	2679	38.23	31.58	(30.36,32.80)		
1998-2002						
Deprivation Quintile	Total Cases	CR	EASR	95% Confidence Interval	EASR Ratio	Excess Deaths
Affluent	455	32.85	25.69	(23.30,28.09)	1.00	0
2	498	35.42	26.16	(23.82,28.49)	1.02	9
3	468	33.26	24.69	(22.40,26.97)	0.96	-19
4	581	40.70	31.78	(29.14,34.42)	1.24	111
Most Deprived	536	37.25	31.39	(28.68,34.10)	1.22	97
WALES	2538	35.93	27.88	(26.77,28.98)		
2003-2007						
Deprivation Quintile	Total Cases	CR	EASR	95% Confidence Interval	EASR Ratio	Excess Deaths
Affluent	444	30.46	22.54	(20.41,24.66)	1.00	0
2	511	35.16	23.93	(21.81,26.05)	1.06	30
3	554	38.40	26.71	(24.43,28.99)	1.19	87
4	522	36.33	26.72	(24.37,29.06)	1.19	82
Most Deprived	530	37.19	30.87	(28.18,33.55)	1.37	143
WALES	2561	35.49	25.99	(24.96,27.02)		



## FEMALES

## 1993-1997

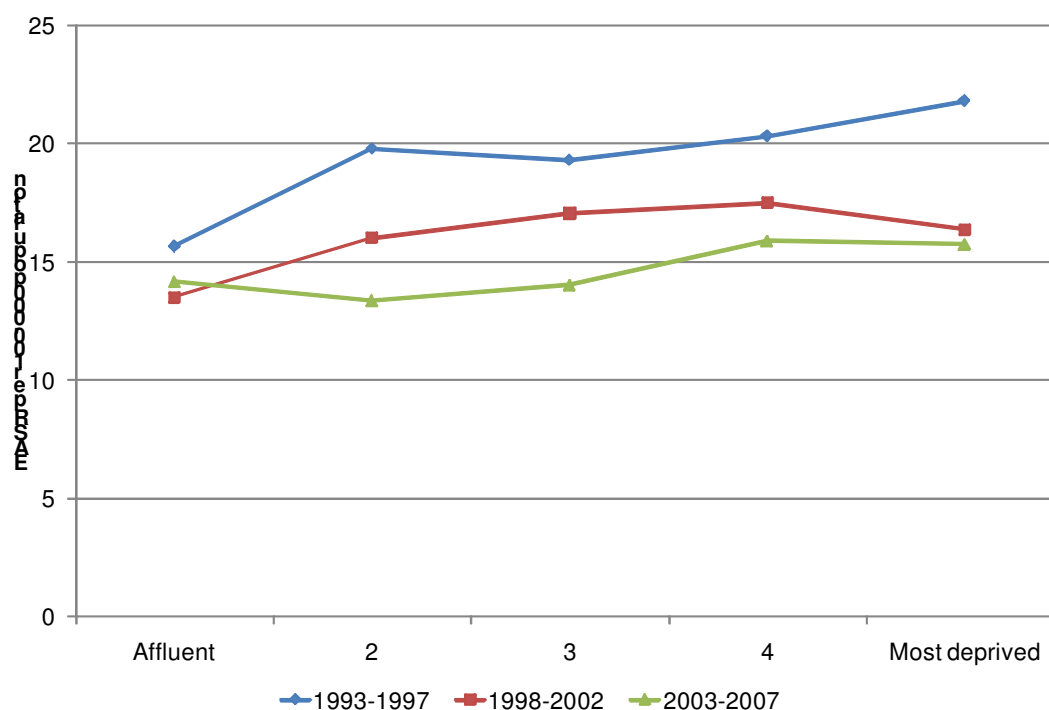
Deprivation Quintile	Total Cases	CR	EASR	95% Confidence Interval	EASR Ratio	Excess Deaths
Affluent	365	26.02	15.68	(13.94,17.42)	1.00	0
2	499	34.42	19.81	(17.91,21.72)	1.26	104
3	529	35.55	19.32	(17.50,21.15)	1.23	100
4	552	36.01	20.34	(18.47,22.22)	1.30	127
Most Deprived	530	33.49	21.83	(19.81,23.84)	1.39	149
WALES	2475	33.19	19.46	(18.62,20.29)		

## 1998-2002

Deprivation Quintile	Total Cases	CR	EASR	95% Confidence Interval	EASR Ratio	Excess Deaths
Affluent	336	23.10	13.53	(11.97,15.09)	1.00	0
2	443	29.98	16.03	(14.41,17.66)	1.18	69
3	488	32.54	17.07	(15.39,18.76)	1.26	101
4	482	31.62	17.51	(15.78,19.23)	1.29	110
Most Deprived	424	27.42	16.39	(14.69,18.09)	1.21	74
WALES	2173	28.96	16.16	(15.41,16.90)		

## 2003-2007

Deprivation Quintile	Total Cases	CR	EASR	95% Confidence Interval	EASR Ratio	Excess Deaths
Affluent	369	24.59	14.17	(12.63,15.71)	1.00	0
2	390	25.85	13.37	(11.93,14.82)	0.94	-23
3	424	28.00	14.03	(12.54,15.52)	0.99	-4
4	441	28.99	15.91	(14.25,17.57)	1.12	48
Most Deprived	417	27.17	15.75	(14.07,17.42)	1.11	42
WALES	2041	26.93	14.61	(13.92,15.31)		



## SURVIVAL: Colorectal Cancer

ICD10 codes: C18-C20

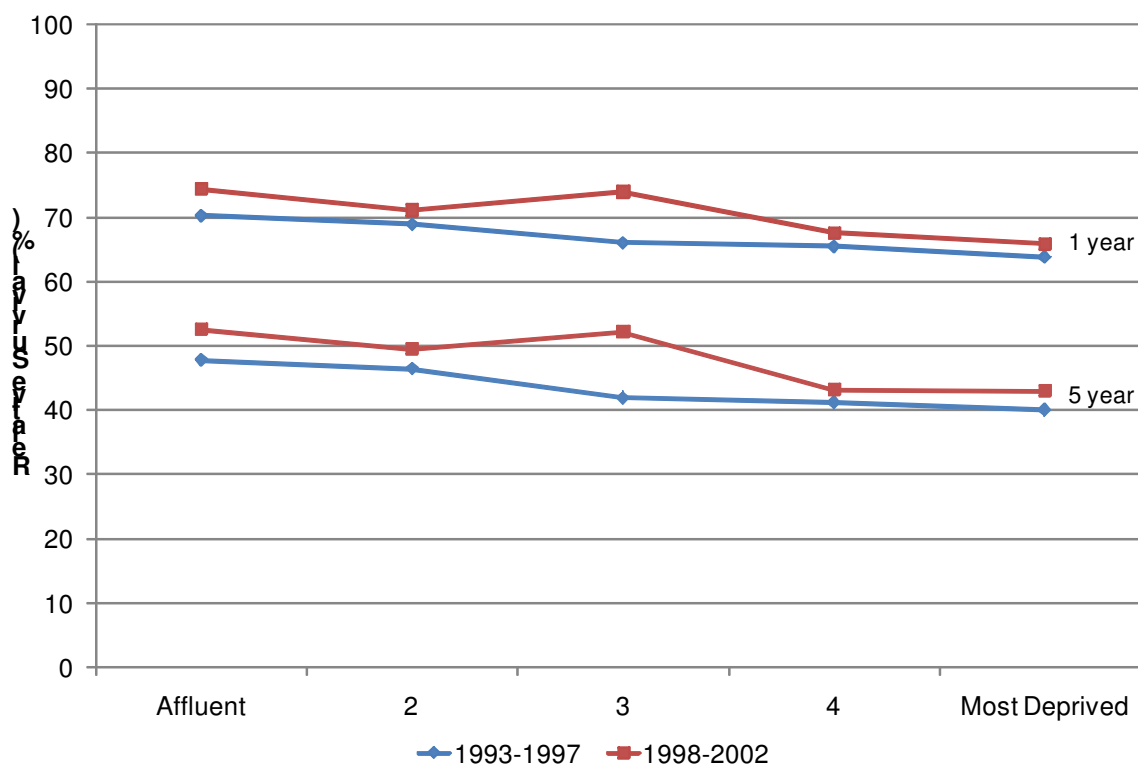
## MALES

## 1993-1997

Deprivation Quintile	One year survival			Five year survival			Median Survival
	Obs	Rel	95% CI	Obs	Rel	95% CI	
Affluent	66.81	70.34	(66.65,73.71)	37.32	47.85	(43.49,52.08)	2.60
2	64.98	69.00	(65.43,72.28)	35.89	46.52	(42.35,50.57)	2.43
3	62.69	66.07	(62.69,69.22)	33.05	41.94	(38.18,45.66)	2.09
4	61.95	65.49	(62.14,68.63)	31.09	41.22	(37.43,44.96)	1.86
Most Deprived	60.38	63.82	(60.32,67.10)	31.00	40.07	(36.23,43.87)	1.78
WALES	63.2	66.78	(65.24,68.26)	33.48	43.29	(41.52,45.05)	2.08

## 1998-2002

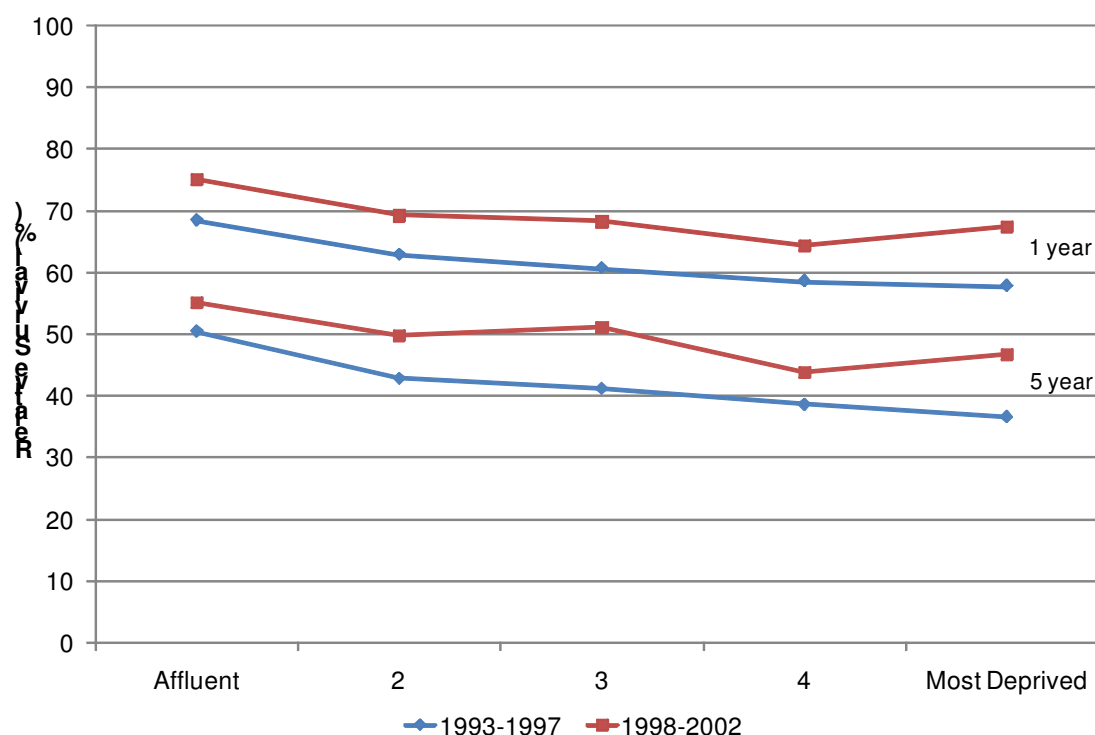
Deprivation Quintile	One year survival			Five year survival			Median Survival
	Obs	Rel	95% CI	Obs	Rel	95% CI	
Affluent	70.29	74.38	(70.97,77.45)	42.19	52.65	(48.52,56.61)	3.26
2	67.55	71.12	(67.86,74.11)	39.36	49.66	(45.81,53.39)	2.58
3	70.22	73.99	(70.80,76.89)	40.93	52.30	(48.38,56.06)	2.87
4	64.38	67.63	(64.32,70.71)	34.76	43.28	(39.57,46.93)	2.17
Most Deprived	62.87	65.98	(62.67,69.08)	34.75	43.07	(39.40,46.69)	1.92
WALES	66.99	70.50	(69.06,71.89)	38.31	48.05	(46.33,49.74)	2.48



## FEMALES

1993-1997							
Deprivation Quintile	One year survival			Five year survival			Median Survival
	Obs	Rel	95% CI	Obs	Rel	95% CI	
Affluent	65.03	68.53	(64.30,72.37)	40.51	50.55	(45.71,55.19)	3.01
2	59.73	62.95	(58.99,66.64)	34.25	42.92	(38.62,47.14)	1.95
3	57.48	60.74	(57.09,64.19)	32.54	41.23	(37.32,45.11)	1.77
4	55.52	58.55	(54.90,62.02)	30.65	38.68	(34.83,42.52)	1.49
Most Deprived	54.77	57.79	(54.00,61.39)	29.35	36.63	(32.71,40.56)	1.59
WALES	58.11	61.28	(59.59,62.92)	33.05	41.54	(39.69,43.37)	1.80

1998-2002							
Deprivation Quintile	One year survival			Five year survival			Median Survival
	Obs	Rel	95% CI	Obs	Rel	95% CI	
Affluent	71.04	75.10	(71.27,78.49)	44.67	55.19	(50.59,59.55)	3.71
2	65.66	69.29	(65.58,72.69)	40.36	49.77	(45.51,53.88)	2.78
3	64.78	68.34	(64.67,71.71)	41.09	51.11	(46.92,55.14)	2.76
4	61.29	64.41	(60.62,67.92)	35.37	43.88	(39.73,47.95)	1.99
Most Deprived	63.96	67.51	(63.62,71.09)	36.78	46.72	(42.29,51.03)	2.25
WALES	65.23	68.79	(67.14,70.38)	39.58	49.24	(47.32,51.13)	2.61

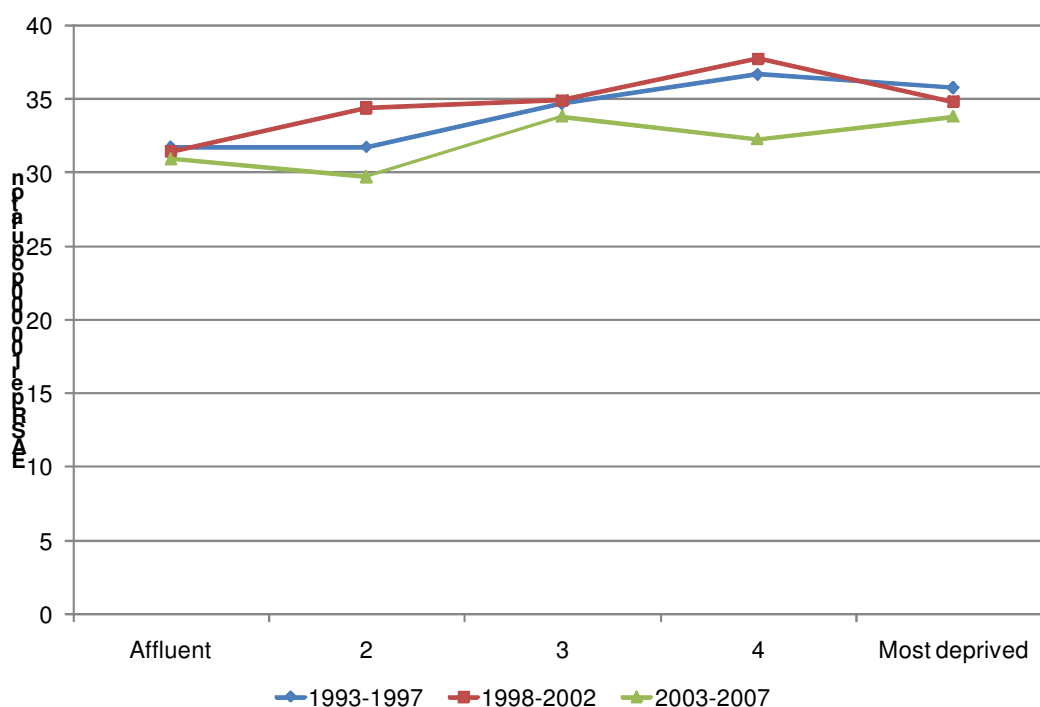


## INCIDENCE: Bladder Cancer

ICD10 codes: C67

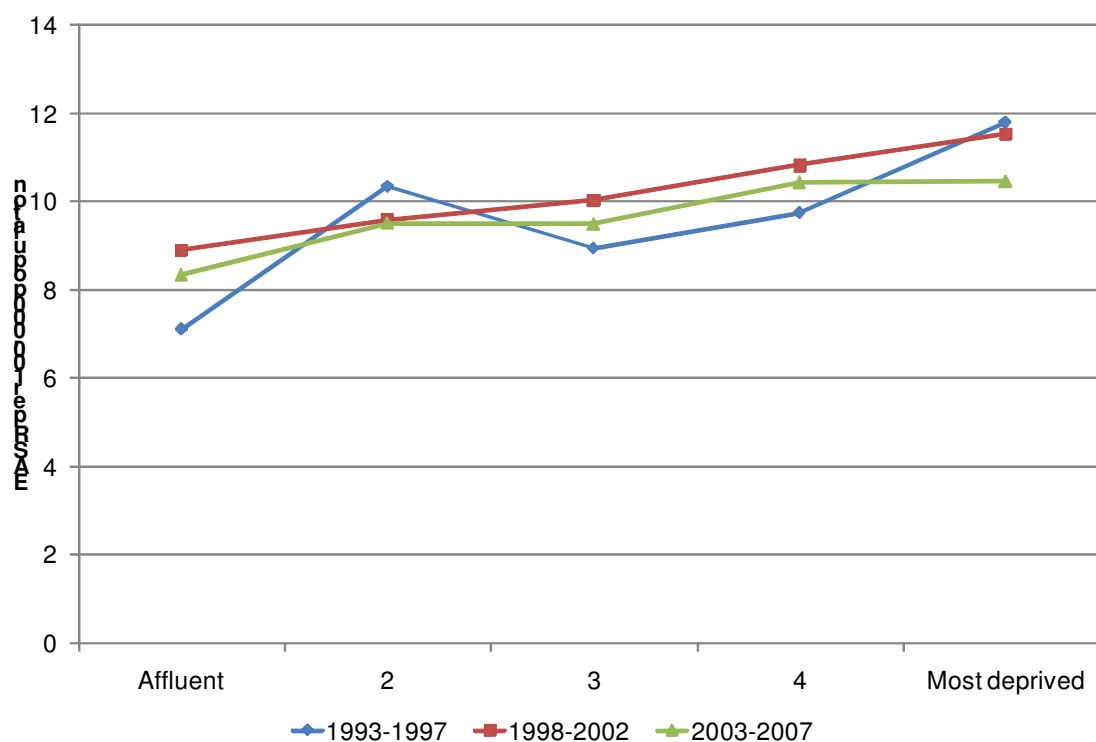
## MALES

1993-1997						
Deprivation Quintile	Total Cases	CR	EASR	95% Confidence Interval	EASR Ratio	Excess Cases
Affluent	512	38.57	31.73	(28.93,34.52)	1.00	0
2	559	40.60	31.75	(29.07,34.42)	1.00	0
3	615	44.20	34.68	(31.87,37.48)	1.09	52
4	637	44.40	36.70	(33.78,39.61)	1.16	86
Most Deprived	593	40.13	35.80	(32.85,38.73)	1.13	67
WALES	2916	41.61	34.15	(32.89,35.41)		
1998-2002						
Deprivation Quintile	Total Cases	CR	EASR	95% Confidence Interval	EASR Ratio	Excess Cases
Affluent	563	40.65	31.47	(28.83,34.10)	1.00	0
2	648	46.09	34.45	(31.74,37.14)	1.09	56
3	659	46.83	34.95	(32.22,37.68)	1.11	66
4	687	48.13	37.79	(34.91,40.66)	1.20	115
Most Deprived	579	40.23	34.85	(31.96,37.73)	1.11	56
WALES	3136	44.39	34.69	(33.45,35.93)		
2003-2007						
Deprivation Quintile	Total Cases	CR	EASR	95% Confidence Interval	EASR Ratio	Excess Cases
Affluent	617	42.32	30.95	(28.46,33.43)	1.00	0
2	633	43.55	29.76	(27.39,32.13)	0.96	-25
3	684	47.42	33.82	(31.22,36.41)	1.09	58
4	627	43.64	32.30	(29.71,34.89)	1.04	26
Most Deprived	574	40.28	33.80	(30.97,36.62)	1.09	48
WALES	3135	43.45	32.03	(30.88,33.17)		



## FEMALES

1993-1997						
Deprivation Quintile	Total Cases	CR	EASR	95% Confidence Interval	EASR Ratio	Excess Cases
Affluent	156	11.12	7.10	(5.89,8.29)	1.00	0
2	249	17.17	10.34	(8.93,11.73)	1.46	78
3	230	15.46	8.93	(7.67,10.19)	1.26	47
4	237	15.46	9.74	(8.37,11.09)	1.37	64
Most Deprived	259	16.37	11.79	(10.24,13.33)	1.66	103
WALES	1131	15.17	9.61	(9.00,10.22)		
1998-2002						
Deprivation Quintile	Total Cases	CR	EASR	95% Confidence Interval	EASR Ratio	Excess Cases
Affluent	207	14.23	8.90	(7.60,10.20)	1.00	0
2	233	15.77	9.58	(8.25,10.91)	1.08	17
3	266	17.74	10.02	(8.70,11.34)	1.13	30
4	268	17.58	10.82	(9.40,12.24)	1.22	48
Most Deprived	267	17.27	11.53	(10.03,13.03)	1.30	61
WALES	1241	16.54	10.17	(9.55,10.78)		
2003-2007						
Deprivation Quintile	Total Cases	CR	EASR	95% Confidence Interval	EASR Ratio	Excess Cases
Affluent	210	14.00	8.34	(7.14,9.53)	1.00	0
2	254	16.83	9.51	(8.24,10.76)	1.14	31
3	252	16.64	9.49	(8.21,10.77)	1.14	31
4	266	17.49	10.44	(9.07,11.80)	1.25	54
Most Deprived	238	15.51	10.47	(9.01,11.91)	1.25	48
WALES	1220	16.10	9.60	(9.01,10.18)		



**MORTALITY: Bladder Cancer***ICD10 codes: C67***MALES****1993-1997**

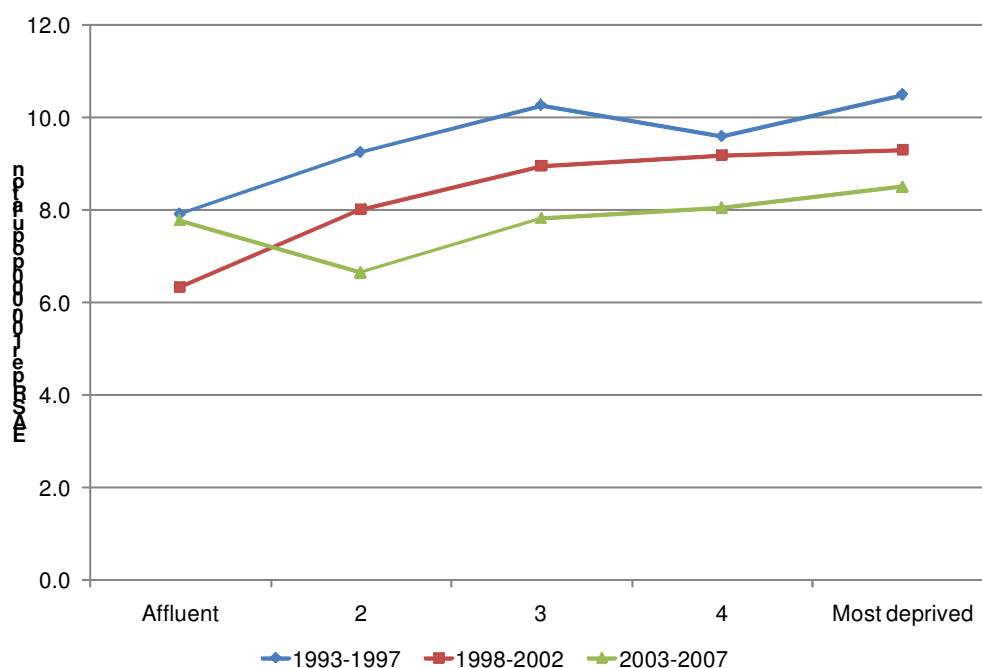
Deprivation Quintile	Total Cases	CR	EASR	95% Confidence Interval	EASR Ratio	Excess Deaths
Affluent	132	9.94	7.91	(6.53,9.29)	1.00	0
2	169	12.27	9.25	(7.82,10.67)	1.17	24
3	194	13.94	10.27	(8.79,11.74)	1.30	45
4	173	12.06	9.59	(8.13,11.05)	1.21	30
Most Deprived	174	11.77	10.49	(8.90,12.09)	1.33	43
WALES	842	12.01	9.54	(8.88,10.20)		

**1998-2002**

Deprivation Quintile	Total Cases	CR	EASR	95% Confidence Interval	EASR Ratio	Excess Deaths
Affluent	113	8.16	6.34	(5.15,7.53)	1.00	0
2	157	11.17	8.02	(6.75,9.30)	1.26	33
3	181	12.86	8.95	(7.62,10.29)	1.41	53
4	176	12.33	9.19	(7.80,10.57)	1.45	54
Most Deprived	160	11.12	9.30	(7.83,10.77)	1.47	51
WALES	787	11.14	8.37	(7.78,8.97)		

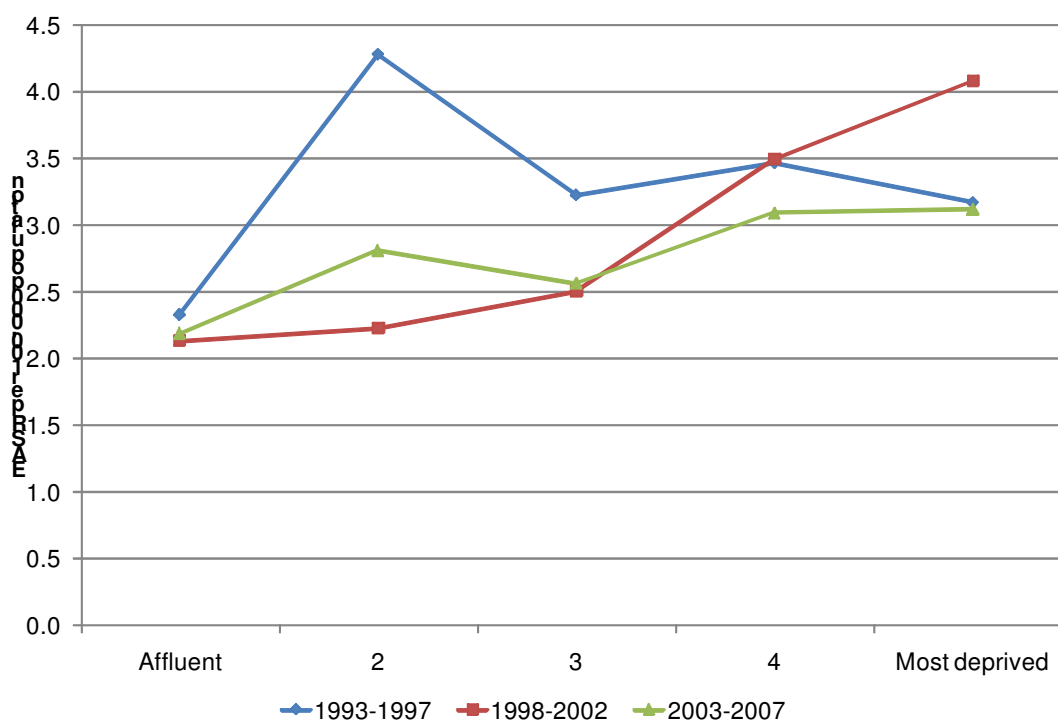
**2003-2007**

Deprivation Quintile	Total Cases	CR	EASR	95% Confidence Interval	EASR Ratio	Excess Deaths
Affluent	163	11.18	7.78	(6.56,9.00)	1.00	0
2	143	9.84	6.65	(5.54,7.76)	0.85	-24
3	174	12.06	7.83	(6.64,9.02)	1.01	1
4	168	11.69	8.05	(6.81,9.30)	1.04	6
Most Deprived	154	10.81	8.50	(7.13,9.87)	1.09	13
WALES	802	11.11	7.72	(7.18,8.27)		



## FEMALES

1993-1997						
Deprivation Quintile	Total Cases	CR	EASR	95% Confidence Interval	EASR Ratio	Excess Deaths
Affluent	66	4.70	2.33	(1.73,2.93)	1.00	0
2	116	8.00	4.28	(3.43,5.13)	1.84	53
3	92	6.18	3.22	(2.50,3.94)	1.38	26
4	101	6.59	3.47	(2.73,4.21)	1.49	33
Most Deprived	88	5.56	3.17	(2.46,3.88)	1.36	23
WALES	463	6.21	3.30	(2.98,3.63)		
1998-2002						
Deprivation Quintile	Total Cases	CR	EASR	95% Confidence Interval	EASR Ratio	Excess Deaths
Affluent	61	4.19	2.14	(1.56,2.71)	1.00	0
2	65	4.40	2.23	(1.64,2.82)	1.04	3
3	82	5.47	2.51	(1.91,3.10)	1.17	12
4	111	7.28	3.50	(2.78,4.22)	1.64	43
Most Deprived	110	7.11	4.09	(3.25,4.92)	1.91	52
WALES	429	5.72	2.89	(2.59,3.19)		
2003-2007						
Deprivation Quintile	Total Cases	CR	EASR	95% Confidence Interval	EASR Ratio	Excess Deaths
Affluent	71	4.73	2.19	(1.65,2.72)	1.00	0
2	91	6.03	2.81	(2.18,3.44)	1.29	20
3	85	5.61	2.56	(1.95,3.17)	1.17	12
4	106	6.97	3.09	(2.45,3.73)	1.41	31
Most Deprived	79	5.15	3.12	(2.37,3.87)	1.43	24
WALES	432	5.70	2.74	(2.46,3.02)		





## SURVIVAL: Bladder Cancer

ICD10 codes: C67

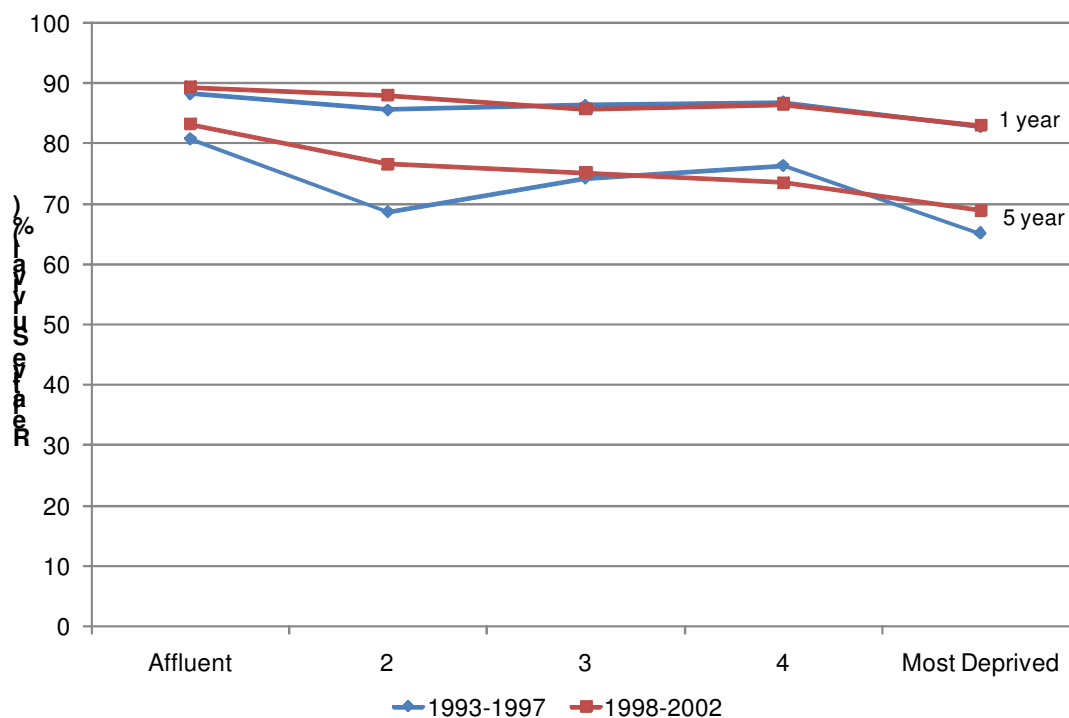
## MALES

## 1993-1997

Deprivation Quintile	One year survival			Five year survival			Median Survival
	Obs	Rel	95% CI	Obs	Rel	95% CI	
Affluent	82.74	88.32	(83.96,91.55)	61.10	80.76	(74.68,85.52)	7.65
2	79.41	85.62	(81.18,89.08)	50.01	68.71	(62.35,74.21)	5.07
3	80.00	86.42	(82.27,89.66)	53.35	74.19	(68.15,79.26)	5.94
4	80.88	86.83	(82.92,89.90)	55.75	76.33	(70.56,81.12)	6.28
Most Deprived	77.21	82.76	(78.43,86.31)	47.89	65.09	(59.09,70.43)	4.61
WALES	79.98	85.94	(84.17,87.52)	53.46	72.97	(70.38,75.39)	5.74

## 1998-2002

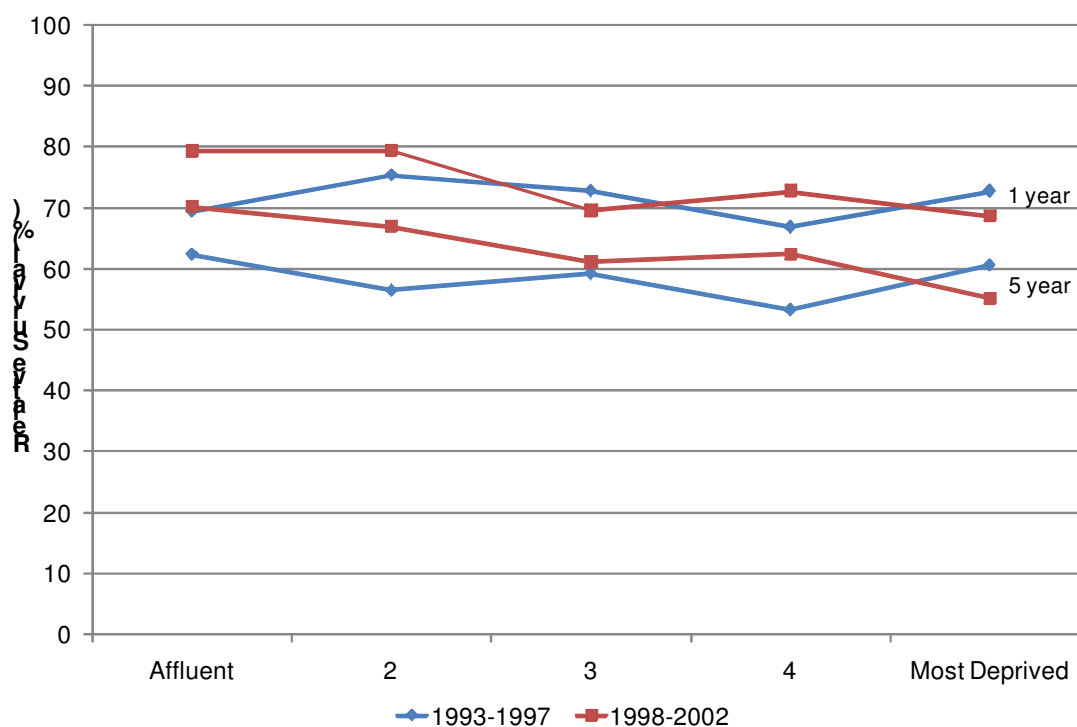
Deprivation Quintile	One year survival			Five year survival			Median Survival
	Obs	Rel	95% CI	Obs	Rel	95% CI	
Affluent	83.71	89.43	(85.43,92.38)	62.07	83.22	(77.48,87.61)	8.26
2	82.10	88.12	(84.21,91.11)	58.50	76.60	(71.11,81.18)	8.21
3	80.66	85.83	(81.97,88.91)	54.90	75.17	(69.46,79.97)	6.66
4	81.07	86.63	(82.82,89.66)	56.54	73.54	(68.19,78.14)	7.10
Most Deprived	79.16	83.08	(78.91,86.49)	54.72	68.95	(63.29,73.92)	6.52
WALES	81.31	86.54	(84.89,88.02)	57.25	75.21	(72.82,77.42)	7.25



## FEMALES

1993-1997							
Deprivation Quintile	One year survival			Five year survival			Median Survival
	Obs	Rel	95% CI	Obs	Rel	95% CI	
Affluent	65.14	69.53	(59.82,77.33)	47.17	62.37	(50.83,71.94)	4.20
2	71.05	75.46	(68.06,81.39)	43.76	56.53	(47.51,64.60)	3.89
3	69.43	72.86	(65.07,79.19)	44.27	59.22	(49.28,67.85)	3.98
4	63.04	66.92	(58.99,73.67)	42.94	53.36	(44.46,61.47)	3.51
Most Deprived	68.92	72.83	(65.48,78.87)	48.54	60.61	(51.95,68.19)	4.66
WALES	67.75	71.76	(68.38,74.84)	45.31	58.19	(54.08,62.06)	3.98

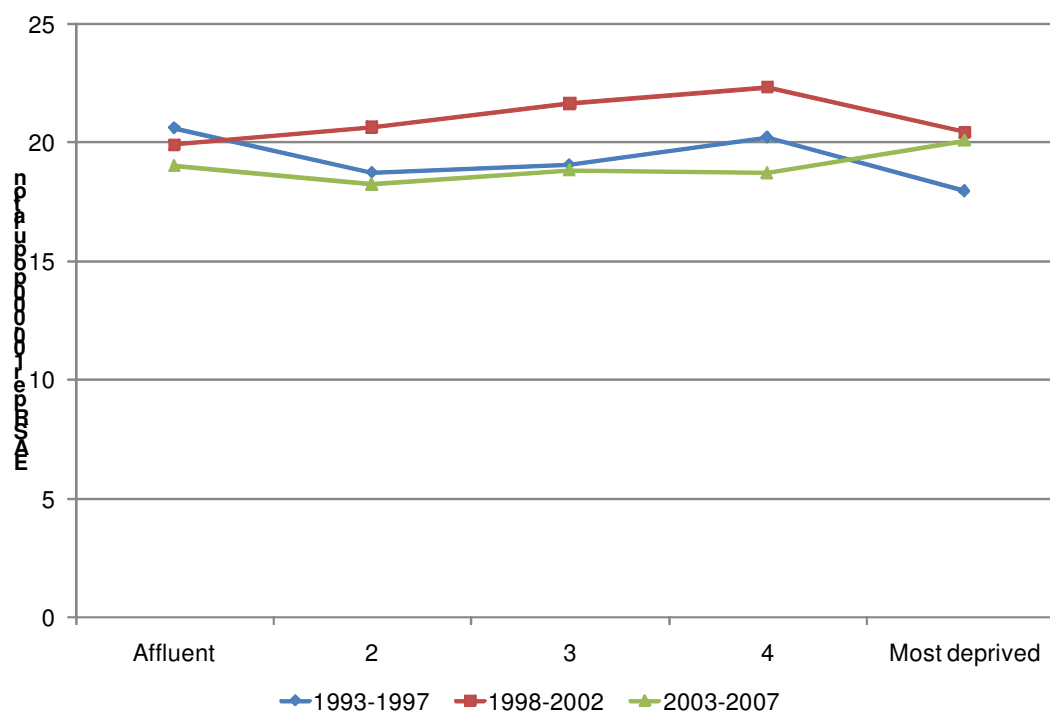
1998-2002							
Deprivation Quintile	One year survival			Five year survival			Median Survival
	Obs	Rel	95% CI	Obs	Rel	95% CI	
Affluent	74.37	79.34	(71.34,85.33)	55.34	70.20	(60.29,78.08)	8.46
2	75.63	79.37	(71.83,85.10)	54.26	66.97	(57.61,74.72)	6.18
3	65.10	69.59	(61.98,75.97)	47.36	61.19	(52.33,68.89)	4.19
4	68.09	72.81	(65.47,78.83)	47.25	62.49	(53.45,70.26)	4.09
Most Deprived	65.37	68.73	(61.46,74.91)	43.61	55.28	(46.69,63.05)	3.01
WALES	69.37	73.64	(70.44,76.55)	49.20	62.87	(58.94,66.54)	4.92



## INCIDENCE: Ovarian Cancer

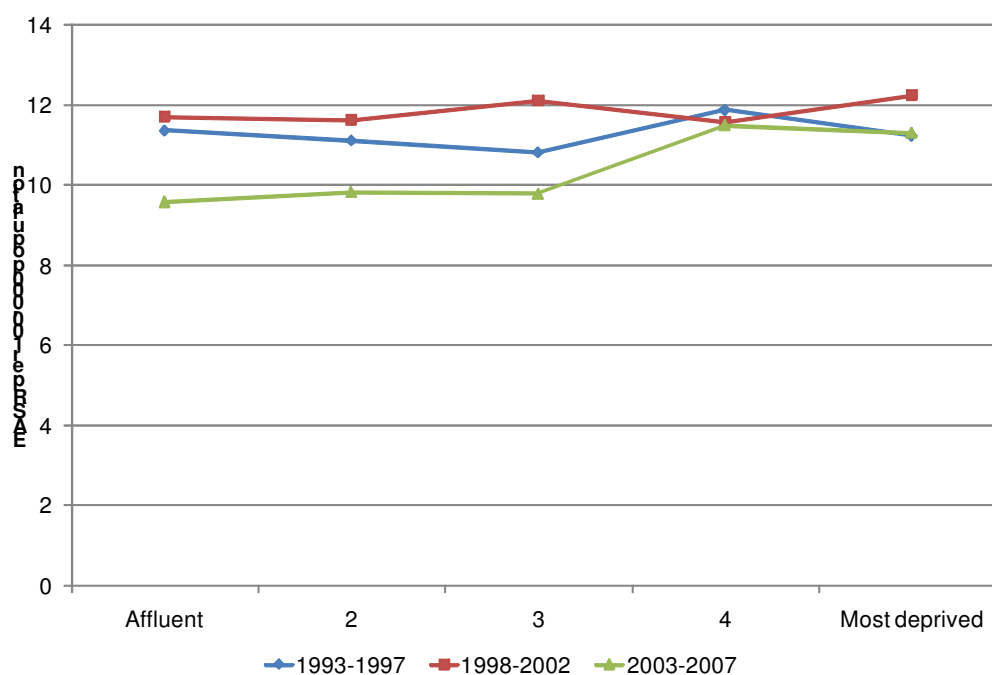
ICD10 codes: C56

1993-1997						
Deprivation Quintile	Total Cases	CR	EASR	95% Confidence Interval	EASR Ratio	Excess Cases
Affluent	356	25.38	20.61	(18.36,22.85)	1.00	0
2	364	25.11	18.75	(16.69,20.80)	0.91	-36
3	374	25.13	19.08	(16.99,21.15)	0.93	-30
4	394	25.70	20.21	(18.07,22.35)	0.98	-8
Most Deprived	333	21.04	17.97	(15.91,20.02)	0.87	-49
WALES	1821	24.42	19.32	(18.37,20.27)		
1998-2002						
Deprivation Quintile	Total Cases	CR	EASR	95% Confidence Interval	EASR Ratio	Excess Cases
Affluent	374	25.71	19.94	(17.82,22.04)	1.00	0
2	411	27.81	20.65	(18.53,22.77)	1.04	14
3	443	29.54	21.66	(19.48,23.83)	1.09	35
4	434	28.47	22.33	(20.09,24.57)	1.12	47
Most Deprived	382	24.70	20.45	(18.27,22.61)	1.03	10
WALES	2044	27.24	21.03	(20.06,21.99)		
2003-2007						
Deprivation Quintile	Total Cases	CR	EASR	95% Confidence Interval	EASR Ratio	Excess Cases
Affluent	391	26.06	19.03	(17.05,20.99)	1.00	0
2	393	26.05	18.25	(16.33,20.17)	0.96	-17
3	394	26.02	18.86	(16.87,20.84)	0.99	-4
4	387	25.44	18.72	(16.72,20.71)	0.98	-6
Most Deprived	372	24.24	20.10	(17.93,22.26)	1.06	20
WALES	1937	25.56	18.95	(18.05,19.83)		



**MORTALITY: Ovarian Cancer****ICD10 codes: C56**

1993-1997						
Deprivation Quintile	Total Cases	CR	EASR	95% Confidence Interval	EASR Ratio	Excess Deaths
Affluent	203	14.47	11.37	(9.72,13.01)	1.00	0
2	228	15.73	11.11	(9.57,12.66)	0.98	-5
3	231	15.52	10.81	(9.30,12.33)	0.95	-12
4	243	15.85	11.88	(10.28,13.49)	1.05	11
Most Deprived	222	14.03	11.24	(9.66,12.82)	0.99	-2
WALES	1127	15.11	11.30	(10.60,12.01)		
1998-2002						
Deprivation Quintile	Total Cases	CR	EASR	95% Confidence Interval	EASR Ratio	Excess Deaths
Affluent	238	16.36	11.71	(10.15,13.27)	1.00	0
2	254	17.19	11.63	(10.10,13.16)	0.99	-2
3	271	18.07	12.11	(10.54,13.67)	1.03	9
4	257	16.86	11.58	(10.05,13.11)	0.99	-3
Most Deprived	244	15.78	12.24	(10.60,13.88)	1.05	11
WALES	1264	16.85	11.84	(11.14,12.54)		
2003-2007						
Deprivation Quintile	Total Cases	CR	EASR	95% Confidence Interval	EASR Ratio	Excess Deaths
Affluent	217	14.46	9.59	(8.25,10.92)	1.00	0
2	237	15.71	9.83	(8.49,11.17)	1.03	6
3	235	15.52	9.79	(8.44,11.14)	1.02	5
4	268	17.62	11.49	(10.01,12.98)	1.20	44
Most Deprived	227	14.79	11.31	(9.73,12.88)	1.18	34
WALES	1184	15.62	10.37	(9.74,11.00)		



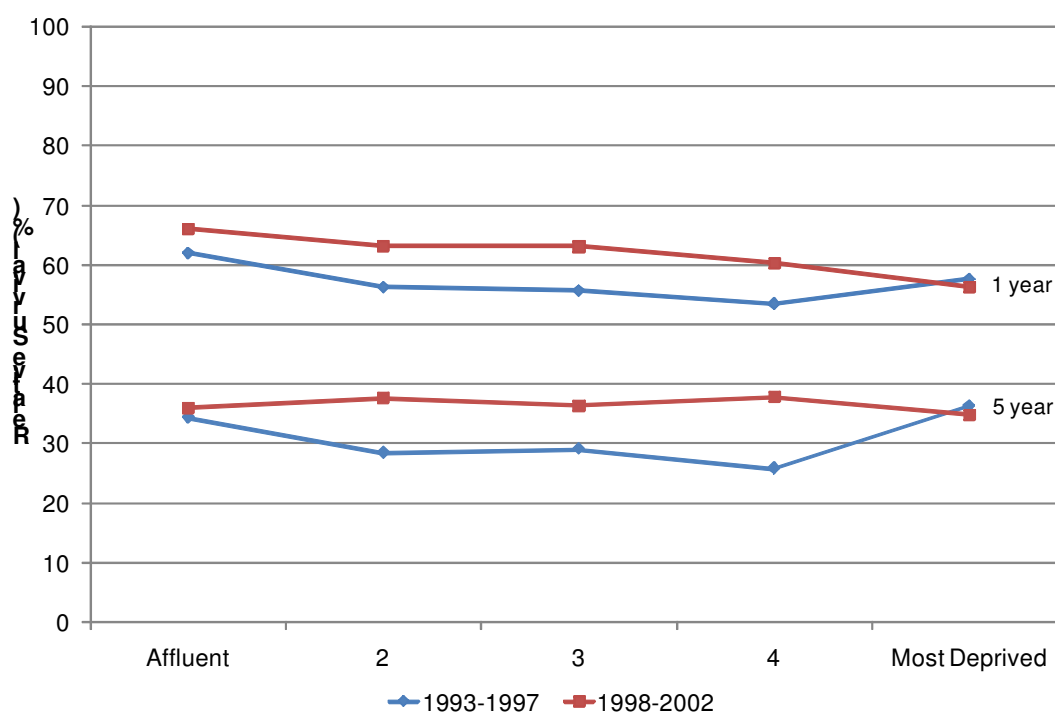
## SURVIVAL: Ovarian Cancer

ICD10 codes: C56

1993-1997							
Deprivation Quintile	One year survival			Five year survival			Median Survival
	Obs	Rel	95% CI	Obs	Rel	95% CI	
Affluent	60.45	62.10	(56.25,67.41)	30.91	34.37	(28.70,40.11)	1.68
2	54.21	56.31	(50.28,61.90)	25.36	28.47	(23.11,34.04)	1.26
3	53.53	55.74	(49.78,61.28)	25.77	29.14	(23.80,34.67)	1.24
4	51.75	53.49	(47.77,58.86)	23.24	25.82	(20.94,30.97)	1.10
Most Deprived	56.14	57.69	(51.32,63.54)	31.93	36.26	(30.06,42.47)	1.39
WALES	55.15	57.01	(54.38,59.54)	27.28	30.59	(28.12,33.10)	1.31

1998-2002							
Deprivation Quintile	One year survival			Five year survival			Median Survival
	Obs	Rel	95% CI	Obs	Rel	95% CI	
Affluent	64.37	66.10	(60.50,71.10)	32.33	36.00	(30.46,41.56)	1.97
2	61.06	63.20	(57.64,68.24)	33.33	37.66	(32.10,43.21)	1.81
3	61.08	63.17	(57.88,67.99)	31.95	36.38	(31.14,41.63)	1.77
4	58.82	60.39	(54.96,65.37)	33.99	37.86	(32.44,43.25)	1.85
Most Deprived	54.77	56.36	(50.55,61.75)	31.14	34.85	(29.27,40.48)	1.26
WALES	60.07	61.91	(59.49,64.23)	32.57	36.59	(34.13,39.04)	1.74

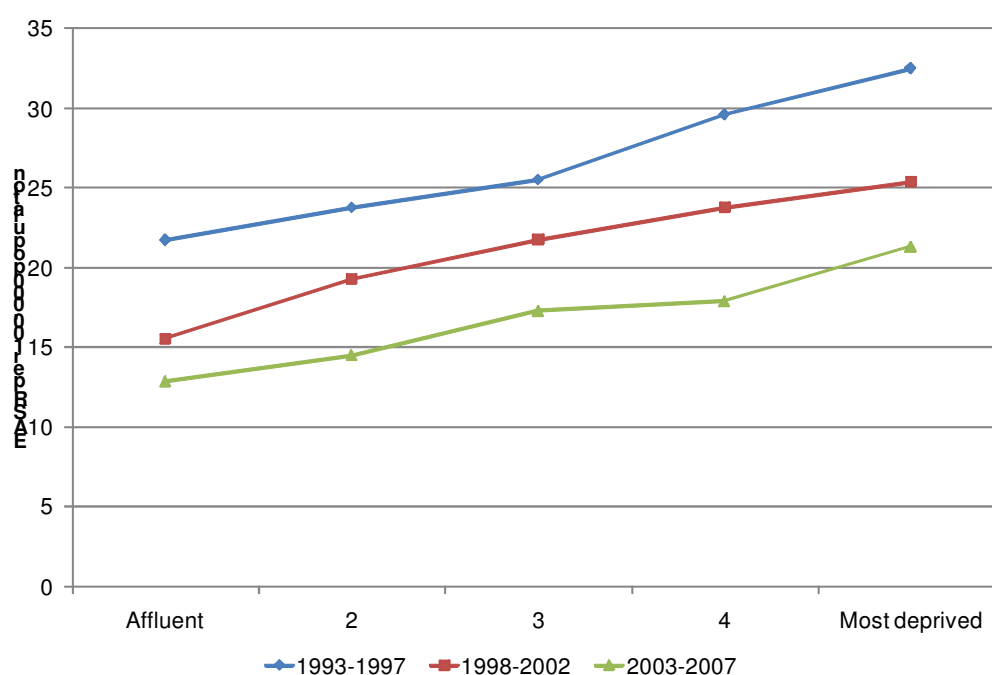


## INCIDENCE: Stomach Cancer

ICD10 codes: C16

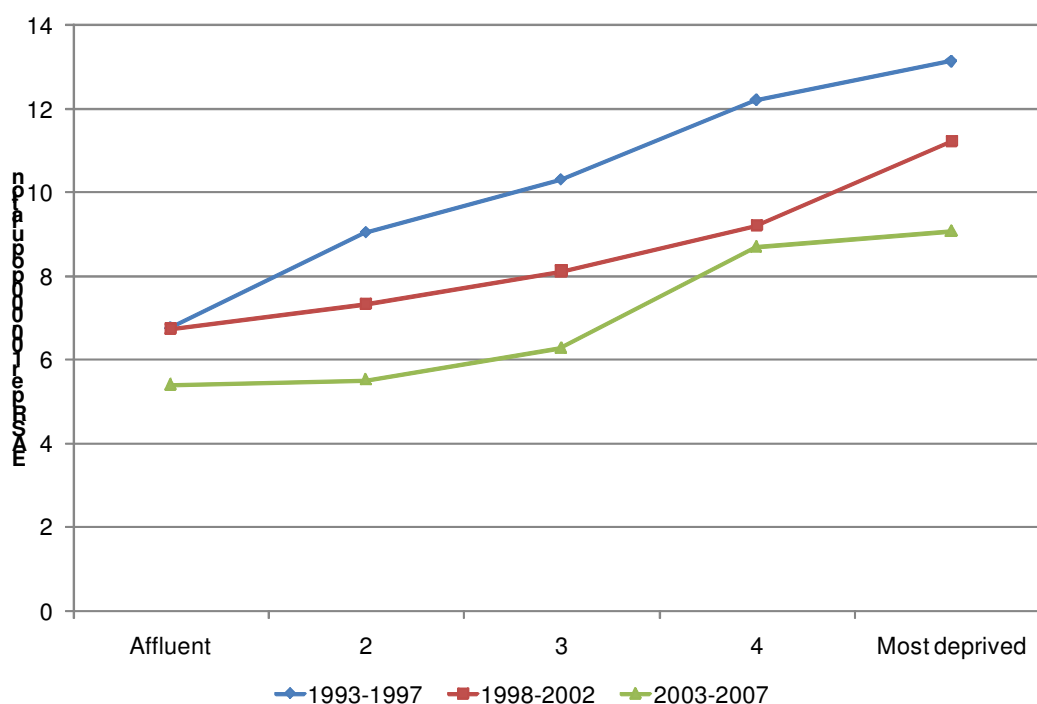
## MALES

1993-1997						
Deprivation Quintile	Total Cases	CR	EASR	95% Confidence Interval	EASR Ratio	Excess Cases
Affluent	354	26.67	21.73	(19.43,24.02)	1.00	0
2	419	30.43	23.77	(21.45,26.09)	1.09	36
3	455	32.70	25.51	(23.11,27.90)	1.17	67
4	517	36.04	29.59	(26.98,32.20)	1.36	137
Most Deprived	529	35.80	32.49	(29.66,35.31)	1.50	175
WALES	2274	32.45	26.63	(25.51,27.74)		
1998-2002						
Deprivation Quintile	Total Cases	CR	EASR	95% Confidence Interval	EASR Ratio	Excess Cases
Affluent	282	20.36	15.58	(13.72,17.42)	1.00	0
2	369	26.25	19.29	(17.28,21.30)	1.24	71
3	406	28.85	21.79	(19.62,23.95)	1.40	116
4	436	30.55	23.78	(21.50,26.06)	1.53	150
Most Deprived	429	29.81	25.39	(22.94,27.83)	1.63	166
WALES	1922	27.21	21.10	(20.14,22.06)		
2003-2007						
Deprivation Quintile	Total Cases	CR	EASR	95% Confidence Interval	EASR Ratio	Excess Cases
Affluent	255	17.49	12.89	(11.27,14.49)	1.00	0
2	305	20.99	14.51	(12.84,16.17)	1.13	34
3	348	24.12	17.29	(15.42,19.15)	1.34	89
4	342	23.80	17.90	(15.96,19.83)	1.39	96
Most Deprived	368	25.82	21.32	(19.09,23.55)	1.65	146
WALES	1618	22.42	16.62	(15.79,17.45)		



## FEMALES

1993-1997						
Deprivation Quintile	Total Cases	CR	EASR	95% Confidence Interval	EASR Ratio	Excess Cases
Affluent	162	11.55	6.77	(5.64,7.88)	1.00	0
2	242	16.69	9.06	(7.81,10.29)	1.34	61
3	277	18.61	10.32	(8.96,11.66)	1.52	95
4	337	21.99	12.22	(10.79,13.63)	1.80	150
Most Deprived	316	19.97	13.14	(11.56,14.71)	1.94	153
WALES	1334	17.89	10.37	(9.76,10.98)		
1998-2002						
Deprivation Quintile	Total Cases	CR	EASR	95% Confidence Interval	EASR Ratio	Excess Cases
Affluent	158	10.86	6.75	(5.62,7.87)	1.00	0
2	211	14.28	7.33	(6.25,8.41)	1.09	17
3	230	15.34	8.13	(6.96,9.29)	1.20	39
4	260	17.06	9.21	(7.98,10.43)	1.36	69
Most Deprived	274	17.72	11.23	(9.79,12.67)	1.66	109
WALES	1133	15.10	8.55	(8.00,9.08)		
2003-2007						
Deprivation Quintile	Total Cases	CR	EASR	95% Confidence Interval	EASR Ratio	Excess Cases
Affluent	139	9.26	5.41	(4.46,6.35)	1.00	0
2	169	11.20	5.52	(4.62,6.41)	1.02	4
3	176	11.62	6.28	(5.25,7.30)	1.16	24
4	252	16.57	8.71	(7.51,9.90)	1.61	96
Most Deprived	227	14.79	9.09	(7.78,10.39)	1.68	92
WALES	963	12.71	6.97	(6.49,7.45)		



**MORTALITY: Stomach Cancer***ICD10 codes: C16***MALES****1993-1997**

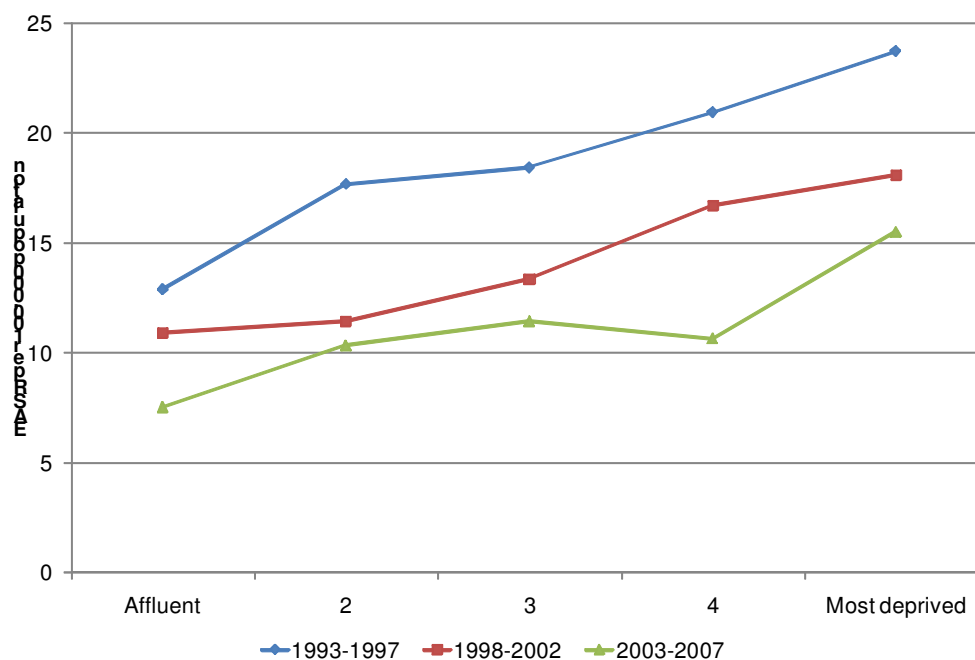
Deprivation Quintile	Total Cases	CR	EASR	95% Confidence Interval	EASR Ratio	Excess Deaths
Affluent	216	16.27	12.90	(11.15,14.65)	1.00	0
2	312	22.66	17.69	(15.69,19.69)	1.37	85
3	330	23.72	18.45	(16.41,20.48)	1.43	99
4	371	25.86	20.97	(18.79,23.15)	1.63	143
<b>Most Deprived</b>	<b>392</b>	<b>26.53</b>	<b>23.75</b>	<b>(21.35,26.15)</b>	<b>1.84</b>	<b>179</b>
<b>WALES</b>	<b>1621</b>	<b>23.13</b>	<b>18.79</b>	<b>(17.86,19.72)</b>		

**1998-2002**

Deprivation Quintile	Total Cases	CR	EASR	95% Confidence Interval	EASR Ratio	Excess Deaths
Affluent	204	14.73	10.92	(9.39,12.44)	1.00	0
2	226	16.08	11.44	(9.92,12.96)	1.05	10
3	254	18.05	13.37	(11.69,15.05)	1.22	47
4	310	21.72	16.73	(14.83,18.63)	1.53	108
<b>Most Deprived</b>	<b>308</b>	<b>21.40</b>	<b>18.11</b>	<b>(16.05,20.17)</b>	<b>1.66</b>	<b>122</b>
<b>WALES</b>	<b>1302</b>	<b>18.43</b>	<b>14.05</b>	<b>(13.27,14.82)</b>		

**2003-2007**

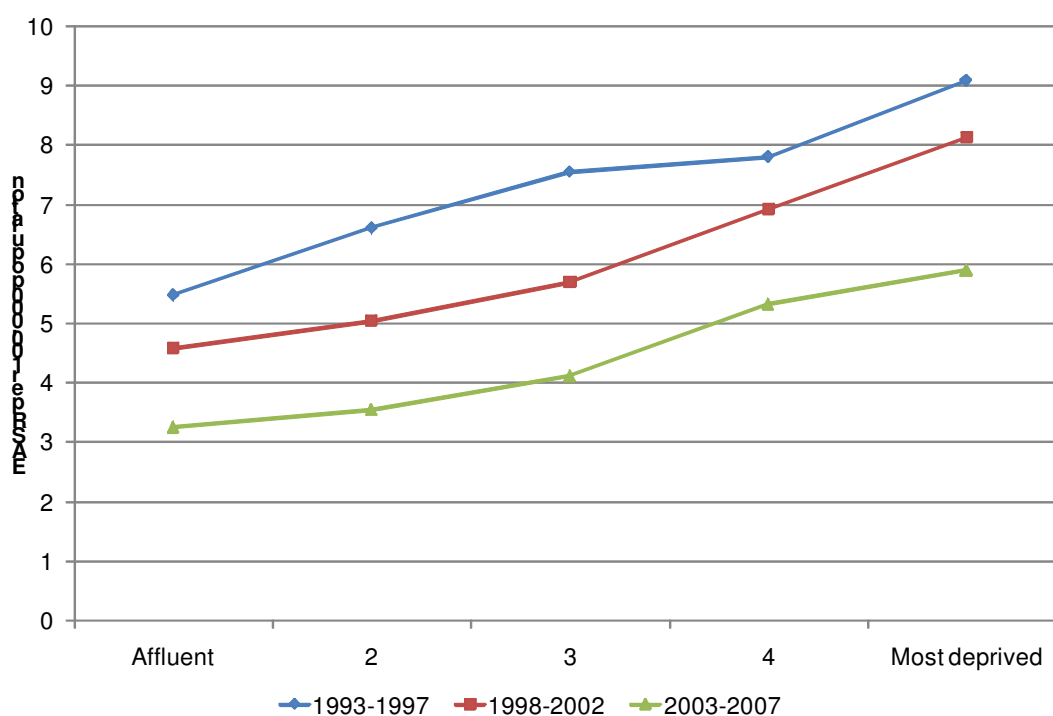
Deprivation Quintile	Total Cases	CR	EASR	95% Confidence Interval	EASR Ratio	Excess Deaths
Affluent	152	10.43	7.54	(6.32,8.76)	1.00	0
2	219	15.07	10.35	(8.94,11.75)	1.37	59
3	235	16.29	11.46	(9.96,12.96)	1.52	80
4	208	14.48	10.67	(9.19,12.15)	1.41	61
<b>Most Deprived</b>	<b>270</b>	<b>18.95</b>	<b>15.52</b>	<b>(13.62,17.42)</b>	<b>2.06</b>	<b>139</b>
<b>WALES</b>	<b>1084</b>	<b>15.02</b>	<b>10.97</b>	<b>(10.30,11.63)</b>		





## FEMALES

1993-1997						
Deprivation Quintile	Total Cases	CR	EASR	95% Confidence Interval	EASR Ratio	Excess Deaths
Affluent	130	9.27	5.49	(4.48,6.50)	1.00	0
2	179	12.35	6.61	(5.56,7.67)	1.21	30
3	208	13.98	7.56	(6.42,8.70)	1.38	57
4	227	14.81	7.81	(6.71,8.91)	1.42	67
Most Deprived	234	14.79	9.09	(7.83,10.35)	1.66	93
WALES	978	13.12	7.35	(6.85,7.85)		
1998-2002						
Deprivation Quintile	Total Cases	CR	EASR	95% Confidence Interval	EASR Ratio	Excess Deaths
Affluent	112	7.70	4.59	(3.68,5.51)	1.00	0
2	150	10.15	5.04	(4.16,5.93)	1.10	13
3	171	11.40	5.71	(4.76,6.66)	1.24	33
4	197	12.92	6.92	(5.86,7.99)	1.51	66
Most Deprived	207	13.39	8.14	(6.94,9.34)	1.77	90
WALES	837	11.16	6.09	(5.64,6.54)		
2003-2007						
Deprivation Quintile	Total Cases	CR	EASR	95% Confidence Interval	EASR Ratio	Excess Deaths
Affluent	86	5.73	3.26	(2.53,3.98)	1.00	0
2	115	7.62	3.55	(2.85,4.25)	1.09	9
3	132	8.72	4.12	(3.34,4.90)	1.27	28
4	171	11.24	5.33	(4.45,6.21)	1.64	67
Most Deprived	159	10.36	5.90	(4.89,6.92)	1.81	71
WALES	663	8.75	4.43	(4.06,4.79)		

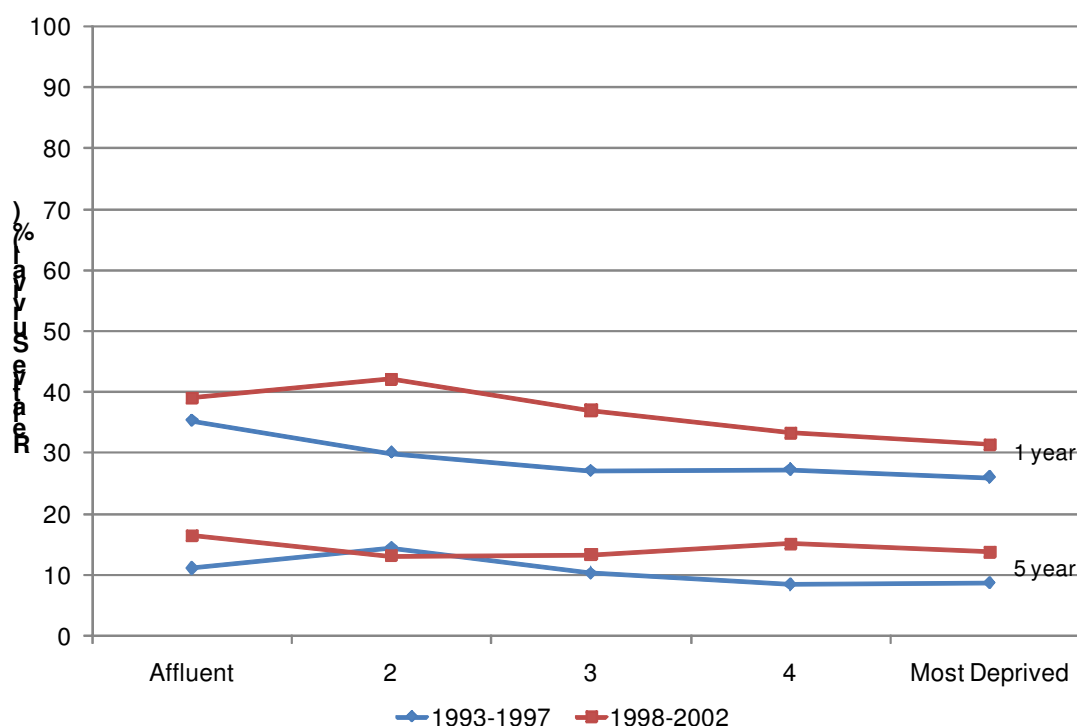


**SURVIVAL: Stomach Cancer***ICD10 codes: C16***MALES****1993-1997**

Deprivation Quintile	One year survival			Five year survival			Median Survival
	Obs	Rel	95% CI	Obs	Rel	95% CI	
<b>Affluent</b>	33.41	35.29	(29.58,41.03)	8.60	11.10	(7.41,15.63)	0.53
<b>2</b>	28.11	30.06	(24.97,35.31)	11.23	14.47	(10.47,19.11)	0.42
<b>3</b>	25.72	27.08	(22.54,31.82)	7.86	10.31	(7.18,14.10)	0.40
<b>4</b>	25.94	27.32	(23.00,31.81)	6.70	8.46	(5.83,11.70)	0.29
<b>Most Deprived</b>	24.74	26.02	(21.87,30.36)	6.62	8.70	(6.01,12.00)	0.34
<b>WALES</b>	27.18	28.72	(26.59,30.88)	8.02	10.35	(8.85,11.99)	0.38

**1998-2002**

Deprivation Quintile	One year survival			Five year survival			Median Survival
	Obs	Rel	95% CI	Obs	Rel	95% CI	
<b>Affluent</b>	36.81	39.13	(32.70,45.50)	12.79	16.48	(11.59,22.13)	0.58
<b>2</b>	39.76	42.14	(36.33,47.82)	10.51	13.17	(9.30,17.71)	0.67
<b>3</b>	35.13	37.05	(31.71,42.39)	10.48	13.29	(9.51,17.71)	0.59
<b>4</b>	31.79	33.31	(28.44,38.24)	12.20	15.14	(11.35,19.42)	0.48
<b>Most Deprived</b>	29.80	31.43	(26.56,36.40)	10.64	13.83	(10.15,18.06)	0.38
<b>WALES</b>	34.30	36.19	(33.77,38.62)	11.28	14.29	(12.44,16.27)	0.53



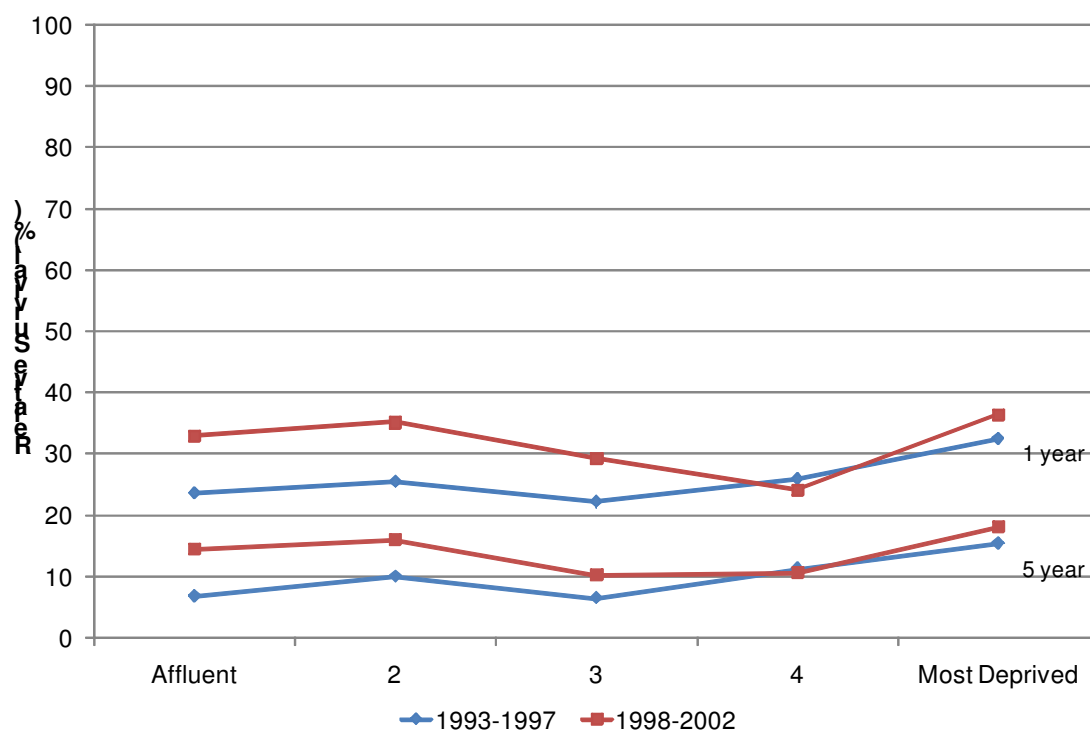
## FEMALES

## 1993-1997

Deprivation Quintile	One year survival			Five year survival			Median Survival
	Obs	Rel	95% CI	Obs	Rel	95% CI	
Affluent	21.93	23.65	(16.30,31.78)	5.29	6.84	(3.03,12.79)	0.25
2	24.15	25.51	(19.14,32.35)	7.73	10.06	(5.82,15.64)	0.25
3	21.00	22.23	(16.72,28.26)	4.99	6.48	(3.39,10.93)	0.31
4	24.48	25.92	(20.66,31.48)	8.53	11.30	(7.45,16.03)	0.29
Most Deprived	31.05	32.46	(26.53,38.52)	12.36	15.48	(10.85,20.86)	0.34
WALES	24.97	26.40	(23.64,29.22)	8.17	10.57	(8.57,12.80)	0.29

## 1998-2002

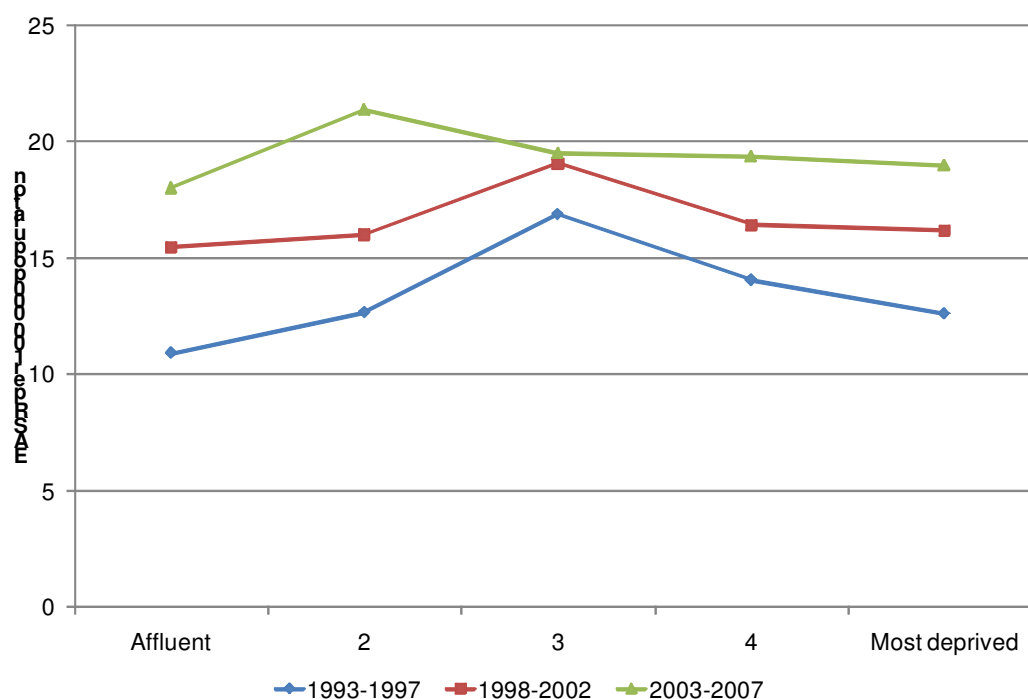
Deprivation Quintile	One year survival			Five year survival			Median Survival
	Obs	Rel	95% CI	Obs	Rel	95% CI	
Affluent	31.46	32.93	(24.57,41.52)	11.79	14.47	(8.51,21.95)	0.48
2	32.66	35.15	(27.40,42.98)	12.04	16.13	(10.17,23.31)	0.36
3	27.55	29.33	(22.71,36.24)	8.23	10.28	(6.10,15.70)	0.33
4	22.92	24.22	(18.58,30.28)	7.94	10.64	(6.47,16.00)	0.35
Most Deprived	34.71	36.38	(29.99,42.78)	14.31	18.17	(12.96,24.10)	0.52
WALES	29.68	31.38	(28.28,34.52)	10.84	13.91	(11.49,16.55)	0.39



# INCIDENCE: Cancer of the Corpus Uteri

ICD10 codes: C54

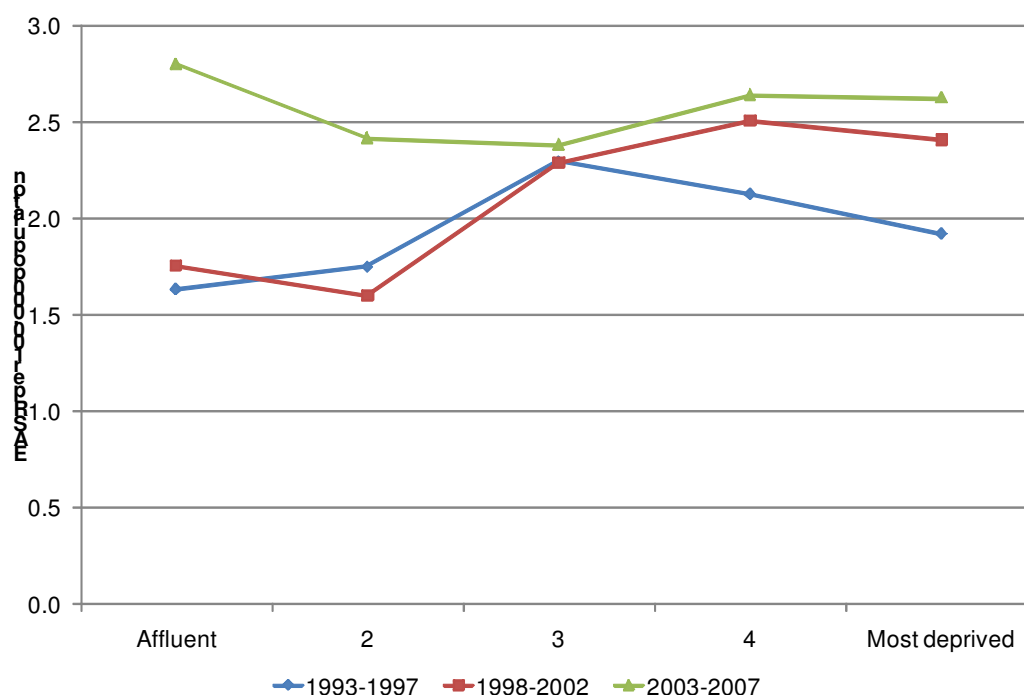
1993-1997						
Deprivation Quintile	Total Cases	CR	EASR	95% Confidence Interval	EASR Ratio	Excess Cases
Affluent	189	13.47	10.90	(9.27,12.52)	1.00	0
2	239	16.48	12.67	(10.95,14.37)	1.16	33
3	325	21.84	16.90	(14.93,18.86)	1.55	115
4	291	18.98	14.07	(12.32,15.80)	1.29	66
Most Deprived	234	14.79	12.61	(10.88,14.33)	1.16	32
WALES	1278	17.14	13.48	(12.69,14.27)		
1998-2002						
Deprivation Quintile	Total Cases	CR	EASR	95% Confidence Interval	EASR Ratio	Excess Cases
Affluent	291	20.01	15.48	(13.63,17.33)	1.00	0
2	317	21.45	16.02	(14.16,17.87)	1.03	11
3	378	25.20	19.07	(17.02,21.10)	1.23	71
4	342	22.44	16.43	(14.57,18.28)	1.06	20
Most Deprived	299	19.34	16.18	(14.24,18.11)	1.04	13
WALES	1627	21.69	16.66	(15.80,17.50)		
2003-2007						
Deprivation Quintile	Total Cases	CR	EASR	95% Confidence Interval	EASR Ratio	Excess Cases
Affluent	366	24.39	18.02	(16.11,19.92)	1.00	0
2	464	30.75	21.40	(19.35,23.43)	1.19	73
3	415	27.41	19.52	(17.54,21.49)	1.08	32
4	401	26.36	19.38	(17.37,21.39)	1.08	28
Most Deprived	349	22.74	19.00	(16.90,21.10)	1.05	18
WALES	1995	26.32	19.50	(18.60,20.39)		



# MORTALITY: Cancer of the Corpus Uteri

ICD10 codes: C54

1993-1997						
Deprivation Quintile	Total Cases	CR	EASR	95% Confidence Interval	EASR Ratio	Excess Deaths
Affluent	38	2.71	1.63	(1.08,2.19)	1.00	0
2	41	2.83	1.75	(1.17,2.33)	1.07	3
3	56	3.76	2.30	(1.63,2.97)	1.41	16
4	55	3.59	2.13	(1.51,2.75)	1.30	13
Most Deprived	47	2.97	1.92	(1.34,2.51)	1.18	7
WALES	237	3.18	1.95	(1.68,2.22)		
1998-2002						
Deprivation Quintile	Total Cases	CR	EASR	95% Confidence Interval	EASR Ratio	Excess Deaths
Affluent	41	2.82	1.76	(1.19,2.33)	1.00	0
2	40	2.71	1.60	(1.06,2.15)	0.91	-4
3	61	4.07	2.29	(1.66,2.93)	1.30	14
4	67	4.40	2.51	(1.85,3.17)	1.43	20
Most Deprived	54	3.49	2.41	(1.72,3.10)	1.37	15
WALES	263	3.51	2.12	(1.84,2.39)		
2003-2007						
Deprivation Quintile	Total Cases	CR	EASR	95% Confidence Interval	EASR Ratio	Excess Deaths
Affluent	65	4.33	2.80	(2.09,3.51)	1.00	0
2	62	4.11	2.42	(1.78,3.06)	0.86	-10
3	65	4.29	2.38	(1.75,3.02)	0.85	-11
4	67	4.40	2.64	(1.95,3.33)	0.94	-4
Most Deprived	59	3.84	2.63	(1.89,3.37)	0.94	-4
WALES	318	4.20	2.57	(2.27,2.87)		



## SURVIVAL: Cancer of the Corpus Uteri

ICD10 codes: C54

1993-1997							
Deprivation Quintile	One year survival			Five year survival			Median Survival
	Obs	Rel	95% CI	Obs	Rel	95% CI	
Affluent	86.78	89.49	(82.46,93.80)	70.37	79.87	(70.54,86.52)	NA
2	84.61	88.41	(82.31,92.50)	64.42	75.16	(67.19,81.46)	NA
3	85.77	89.29	(84.09,92.86)	62.78	75.02	(67.58,81.00)	13.23
4	86.04	90.62	(85.05,94.18)	63.41	76.62	(68.81,82.72)	11.28
Most Deprived	83.54	87.39	(80.97,91.76)	62.23	74.64	(66.19,81.28)	10.32
WALES	85.33	89.16	(86.78,91.13)	64.23	76.19	(72.79,79.23)	12.49

1998-2002							
Deprivation Quintile	One year survival			Five year survival			Median Survival
	Obs	Rel	95% CI	Obs	Rel	95% CI	
Affluent	90.30	93.23	(88.48,96.07)	69.49	79.90	(72.78,85.34)	NA
2	88.03	92.12	(87.24,95.18)	71.09	81.62	(74.88,86.71)	NA
3	87.77	90.92	(86.52,93.94)	69.20	78.95	(72.90,83.81)	NA
4	86.38	90.69	(85.82,93.95)	64.30	75.64	(68.79,81.19)	NA
Most Deprived	85.57	89.15	(83.68,92.87)	68.26	78.65	(71.47,84.23)	NA
WALES	87.60	91.26	(89.33,92.85)	68.42	78.97	(76.14,81.51)	NA

